

APPLICATION

- ▶ Suitable for interior or exterior top hung sliding doors. If fitted on exterior, the top track must be protected by a canopy.
- ▶ Ideal for residential and commercial sliding doors.
- ▶ Versatile design allows the opening to be covered by any number of doors. When a door slides more than twice its width, a continuous channel must be fitted in the floor and two guides fitted onto the bottom rail of the door.
- ▶ The track may be fitted directly beneath the lintel, in single or multiple lines, or face fitted to the lintel using the single line brackets.

DOOR SPECIFICATION

Track System: Trio 45

For Individual Doors:

Max Door Weight 45kg
 Max Door Height 2400mm
 Min Door Thickness 19mm

Suitable for use with timber doors of any design. Adequate provision must be made to securely fit the hangers, since the hangers strike the door stops.

STANDARD SETS AND PACKS

Trio 45 sets, each suitable for sliding one door, comprise - track, brackets, hangers (type 283S for door 25mm minimum thickness and 45kg maximum weight), door stops, 101N guide, spanner; all screws and installation instructions.

Set No.	Door widths	Track length	Qty Brackets supplied
T45/3	Up to 870mm	1700mm	7
T45/4	870mm to 1220mm	2500mm	10
T45/5	1220mm to 1520mm	3000mm	12

Pack No. (Fittings only, no track or brackets).

T45 For door min thickness 19mm, max weight 45kg. Two 283S hangers, two door stops, one guide 101N, spanner; all screws and installation instructions.

On doors up to 1520mm wide, if side fitted brackets are not required, then do not order a standard set, but select T45 fitting pack plus a suitable length of track - see below.

For doors wider than 1520mm select fitting pack T45 and suitable length of track - see below. If the track is to be face fitted to the lintel select the required number of brackets - see below.

HARDWARE SPECIFICATION

Track - punched for soffit fitting: 90

Material Aluminium
 Standard lengths 1250mm (5)
 (Max quantity of track brackets, 1700mm (7)
 if required, shown in parentheses) 2100mm (8)
 2500mm (10)
 3000mm (12)
 3805mm (15)
 5105mm (19)
 6000mm (23)

Bracket:

Single 91
 Pack of 5 brackets 91/5
 Pack of 8 brackets 91/8

Bracket made from stainless steel and supplied with matching fasteners.

Hangers (2 per door): 283S

For door min thickness 19mm, max weight 45kg
 Both hangers incorporate 3 nylon tyred ballrace wheels. The hangers have vertical adjustment. The adjustment bolt is attached to the top plate and secured in place with a locking clip which allows easy installation. All steel parts in zinc dichromate finish.

Spanner: 812

Pressed steel in zinc dichromate finish.

Door Stop: 255

Pressed steel, zinc plated, supplied with a rubber buffer and locking bolt.

Guide: 101N

The nylon guide is designed to slide through a 20mm deep by 5mm wide sawcut in the bottom rail of the door. The guide is fitted on the floor at the edge of the opening in the overlap area. The guide has lateral adjustment.

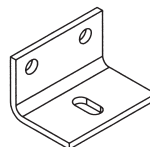
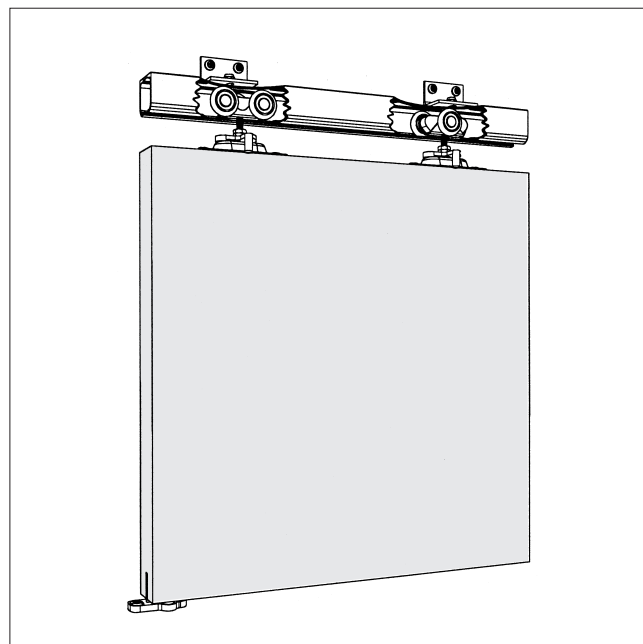
Accessories:

Guide: 102WA

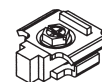
Guide in zinc plated steel, has lateral adjustment. Fits on the wall or architrave, in the overlap area, and slides through a 20mm deep by 5mm wide sawcut in the bottom rail of the door. Floor left free of hardware.

Guide: 103WA

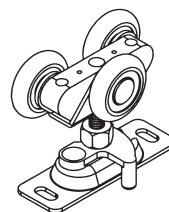
Guide in white nylon, fits on the wall or architrave, in the overlap area, no need to groove the door, since the guide supports the door faces. The guide is adjustable for doors from 35mm to 45mm thick. Floor left free of hardware.



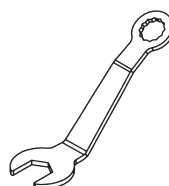
No. 91 Bracket



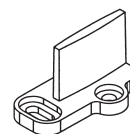
No. 255 Door Stop



No. 283S Hanger

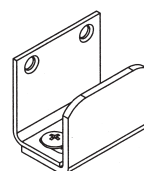


No. 812 Spanner

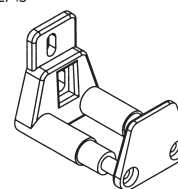


No. 101N Guide - supplied in sets and fitting packs

ALTERNATIVE GUIDE SYSTEMS



No. 102WA Guide



No. 103WA Guide

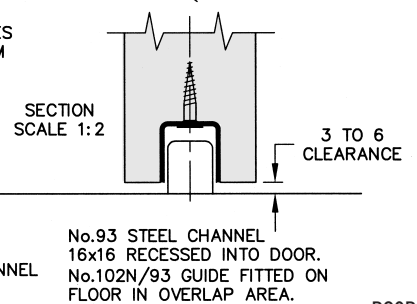
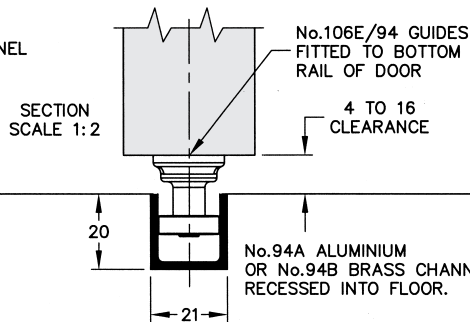
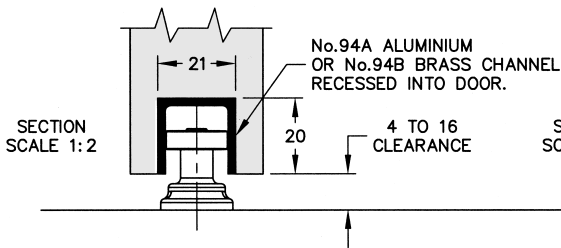
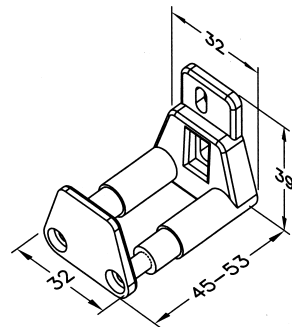
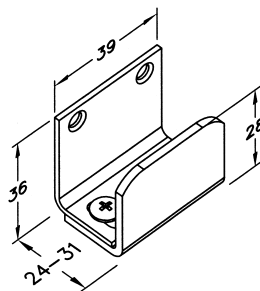
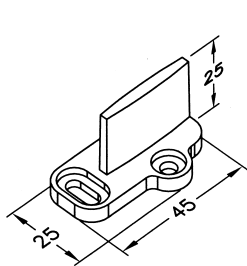
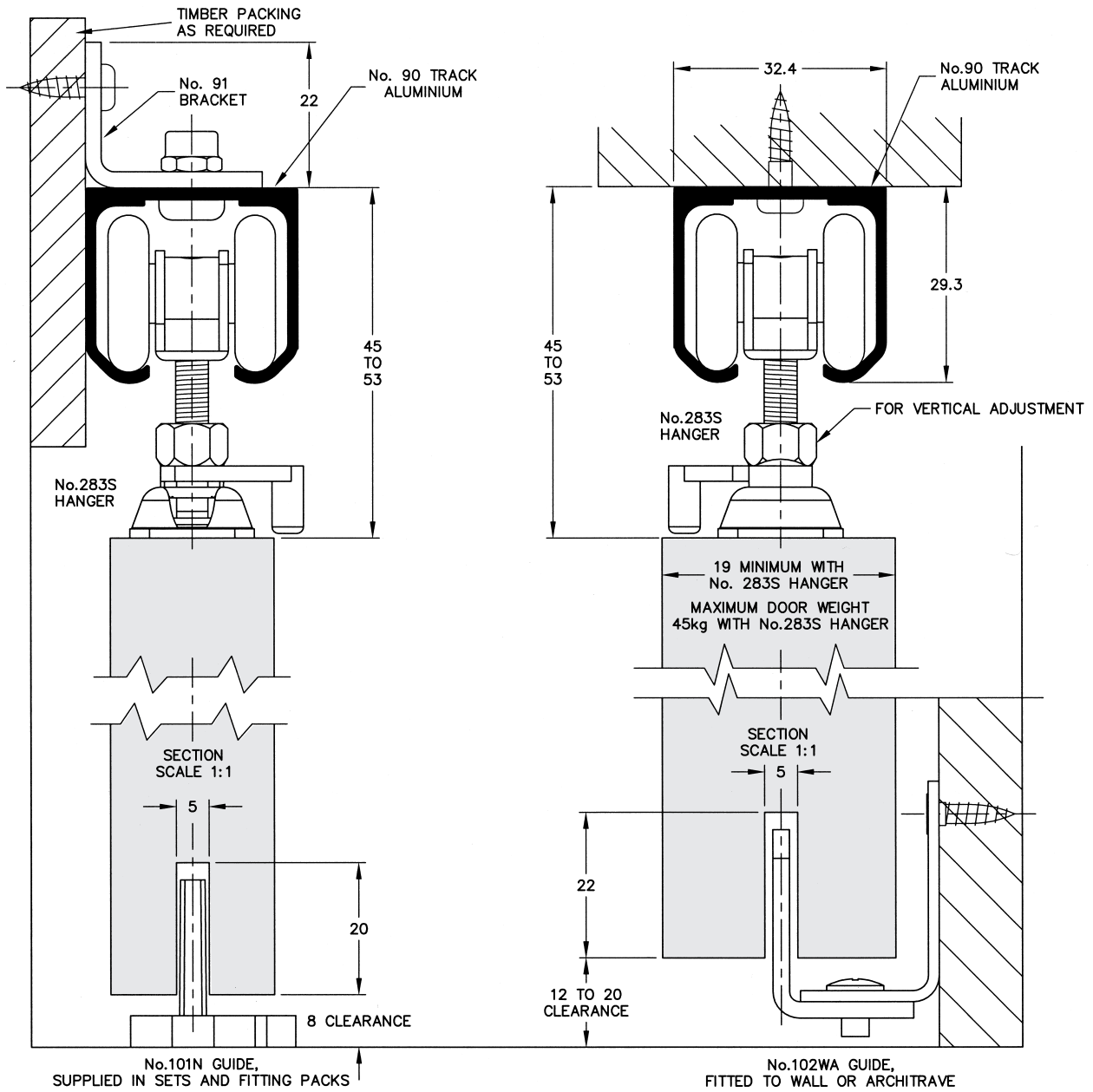
Trio 45

FOR TOP HUNG SLIDING DOORS, MAX. 45kg EACH

HENDERSON®

SLIDING & FOLDING DOOR HARDWARE

AUSTRALIA'S WIDEST RANGE



No.106E/94 GUIDE FITTED ON FLOOR IN OVERLAP AREA.

No.94A ALUMINIUM OR No.94B BRASS CHANNEL RECESSED INTO FLOOR.

No.93 STEEL CHANNEL 16x16 RECESSED INTO DOOR. No.102N/93 GUIDE FITTED ON FLOOR IN OVERLAP AREA.

B90B

HENDERSON RMD

Door Hardware Division of
RMD PRESS CO. PTY LTD.
ACN 004 313 937

© COPYRIGHT HENDERSON RMD

© HENDERSON IS A REGISTERED TRADEMARK OF PC HENDERSON LTD (UK)



SALES OFFICES IN ALL STATES