

APPLICATION

- ▶ For interior and exterior applications.
- ▶ This quality bottom roller hardware is ideally suited to high class joinery installations.
- ▶ Designed for straight sliding partitions or fully glazed patio doors. Also suitable for flush or panelled doors.
- ▶ The bottom roller design is suited to applications where the supporting structure or lintel is insufficient for the weight of the door or where headroom is limited.
- ▶ To cover width of opening, any number of doors can be used on single or multiple lines of rail.
- ▶ To accommodate different building designs, doors can slide to one or both sides.
- ▶ Where doors are fitted externally, a canopy is recommended to protect the top guide channel, brackets and top guide rollers.

DOOR SPECIFICATION

Rail System: **Timberoll 55** **Timberoll 170**

For Individual Doors:

Max Door Height	2600mm	2600mm
Max Door Weight	55kg	170kg
Min Door Thickness	25mm	35mm

Doors must be constructed with bottom rails of at least 150mm depth to accommodate the concealed, mortised, bottom rollers.

Door weight is carried on the floor permitting the use of a light overhead structure.

HARDWARE SPECIFICATION

Top Guide Tee: **Timberoll 55** **Timberoll 170**

96TA Aluminium 96TA Aluminium
Not recommended in situations where the door is likely to warp since the door could bind on the tee. The preferred option is the top guide channel and rollers.

Top Guide Channel: 94A Aluminium 94A Aluminium
94B Brass 94B Brass
900 Aluminium with safety lip

Standard lengths 96TA, 94A & 94B 2000m, 3000mm, 4000mm and 6000mm,
900 2000mm, 3000mm and 4000mm

Top guide tee and channels are drilled and countersunk for direct fitting to soffit.

Top Guide Brackets:

For single line - face fitted 91 Stainless steel 91 Stainless steel
ISS/250 stainless steel

For single line - soffit fitted 3/900 Pressed steel zinc plated

For double line - face fitted 5/900 Pressed steel zinc plated

Fit at 900mm maximum centres.

Top Guide Rollers (2 per door):

Top plate fitting - single nylon roller 106RB/94 106RB/94

Angle plate fitting - single nylon roller 113RN/94 113RN/94

Angle plate fitting - double nylon rollers 203SS/900

one adjustable laterally to prevent rattle

Steel components zinc plated

Bottom Rollers (2 per door): 913N 913SB
913SBA

913N has nylon roller with silver steel axle in zinc plated steel body and is only suitable for internal use.

913SB has brass roller with maintenance free roller bearing in stainless steel body.

913SBA has brass roller with maintenance free ballrace in stainless steel body. The roller has 10mm vertical adjustment.

Bottom Rail: 915B Brass 915B Brass
915A Aluminium 918 Brass
815 Brass

Standard lengths

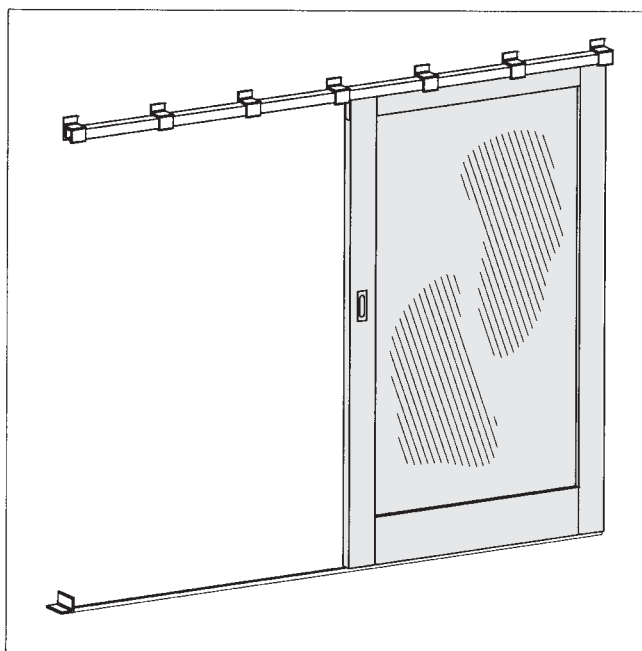
815 available in 2000mm, 3000mm and 5000mm lengths.

915A, 915B and 918 available in 2000mm, 3000mm, 4000mm and 6000mm lengths.

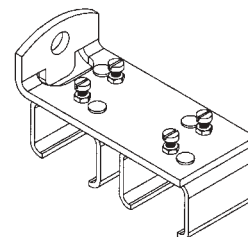
These rails are drilled and countersunk for screwing to timber floor or for attaching to lugs 915L or 918L when installing in concrete floor.

Accessories:

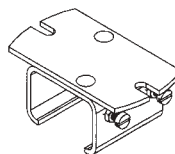
Flush Pulls and Flush Bolts in clear anodised aluminium, with 110SC
Door Stop in satin chrome on brass.
Sponge neoprene seal.



No. 1SS/250 Bracket



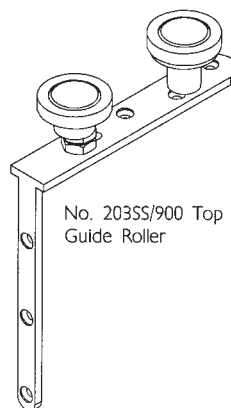
No. 5/900 Bracket



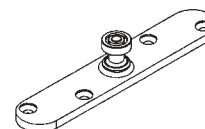
No. 3/900 Bracket



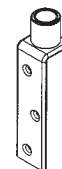
No. 91 Bracket



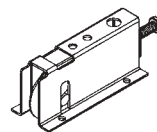
No. 203SS/900 Top Guide Roller



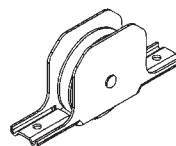
No. 106RB/94 Top Guide Roller



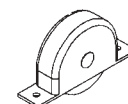
No. 113RN/94 Top Guide Roller



No. 913SBA Bottom Roller



No. 913SB Bottom Roller



No. 913N Bottom Roller

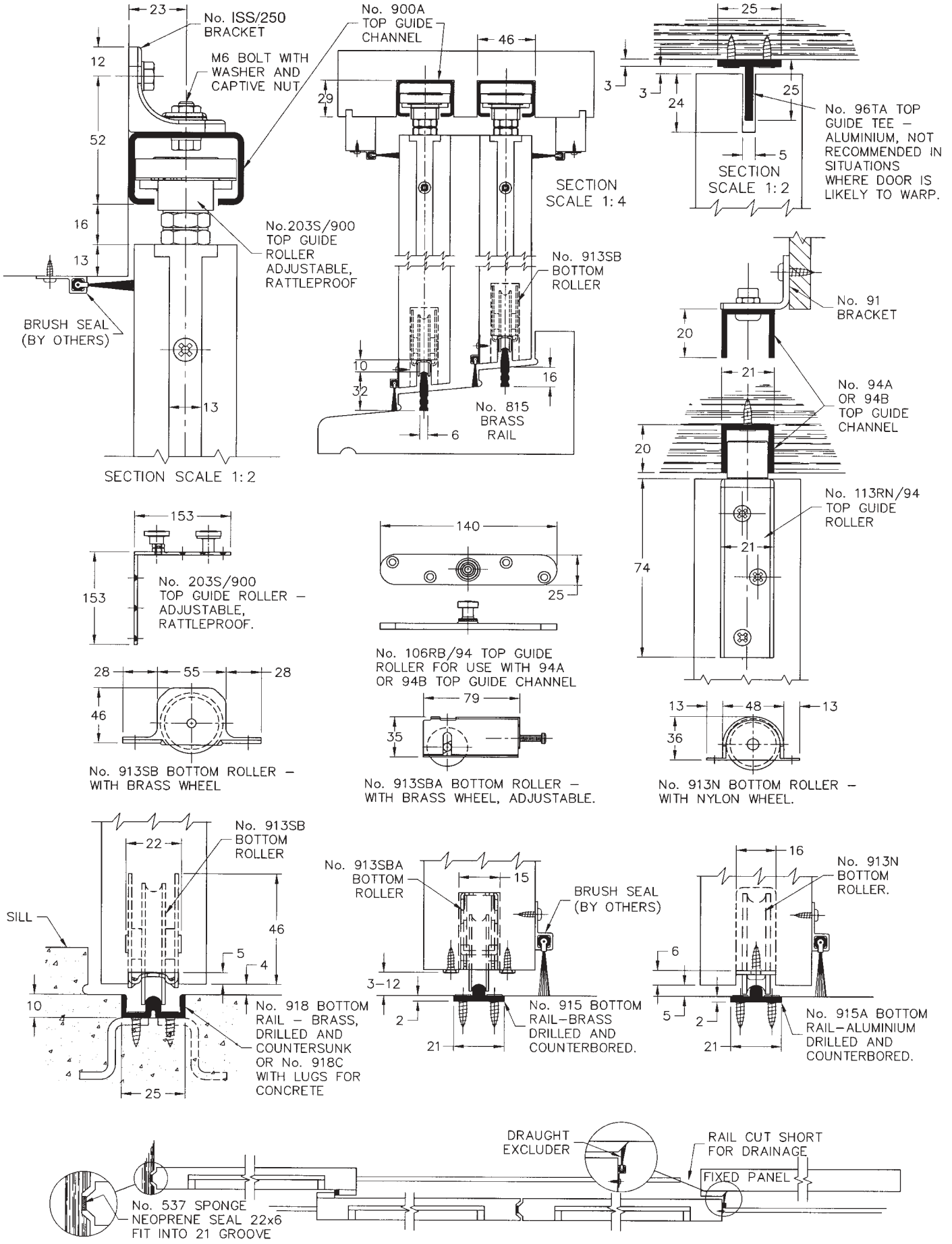
Timberoll 55 & 170

FOR BOTTOM ROLLER SLIDING RESIDENTIAL DOORS, MAX. 170kg EACH

HENDERSON®

SLIDING & FOLDING DOOR HARDWARE

AUSTRALIA'S WIDEST RANGE



C50B

HENDERSON RMD

Door Hardware Division of
RMD PRESS CO. PTY LTD.
 ACN 004 313 937

© COPYRIGHT HENDERSON RMD

© HENDERSON IS A REGISTERED TRADEMARK OF PC HENDERSON LTD (UK)

