

APPLICATION

- ▶ Widely used in lighter commercial and industrial applications.
- ▶ To cover any width of opening, any number of doors can be used.
- ▶ To accommodate different building designs, doors can slide to one or both sides.
- ▶ Hinged door for easy access may be incorporated into a sliding door.
- ▶ Where doors are fitted externally, a canopy is recommended.

DOOR SPECIFICATION

Track System: Single Run 250

For Individual Doors:

Max Door Height 3000mm
 Max Door Weight Nylon Tyre Hanger 250kg
 Door Thickness 35-48mm

For ease of operation it is recommended that the door width should not exceed 75% of door height.

Timber doors for interior use can be of flush construction or glazed.

Timber doors for industrial applications should be framed, ledged and braced.

Metal doors should be constructed of box section, channel or angle framing, well braced and clad with flat or corrugated sheets.

HARDWARE SPECIFICATION

Track: 250
 Material Aluminium
 Standard lengths 2000mm, 3000mm, 4000mm and 6000mm
 Aluminium track available in mill or clear anodised.

Brackets:

Face fitted Stainless Steel, angle – 1SS/250
 Fit at 900mm maximum centres.

Hangers (2 per door):

Hangers Full Stainless

Timber Doors – apron fitting	53HN	–
Timber Doors – angle fitting	52HN	52SS/HN
Timber Doors – plate fitting	57HN	57SS/HN
Metal Doors – angle frame	56HN	56SS/HN
Metal Doors – box frame	56HLN	56SS/HLN
Metal Doors – plate fitting	57HN	57SS/HN

All hangers suffixed 'N' have nylon tyre wheels and are fitted with ball race bearings. Nylon tyre wheel hangers should not be used on installations involving temperatures exceeding 80°C.

Guides:

Timber Doors – face fitting	105R/97
Timber Doors – plate fitting	106RB/94
Metal Doors – angle frame	104P/97
Metal Doors – box frame	104PL/97
Multiple Doors	102W/94

Guides with suffix 97 are used with channel 100.

Channels:

100	Galvanised steel
94A	Aluminium
94B	Brass
94PA	Aluminium support channel for 94P
94P	Polypropylene

Standard lengths

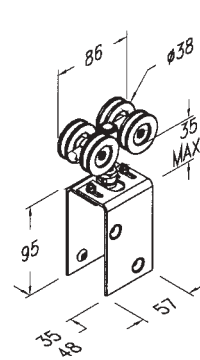
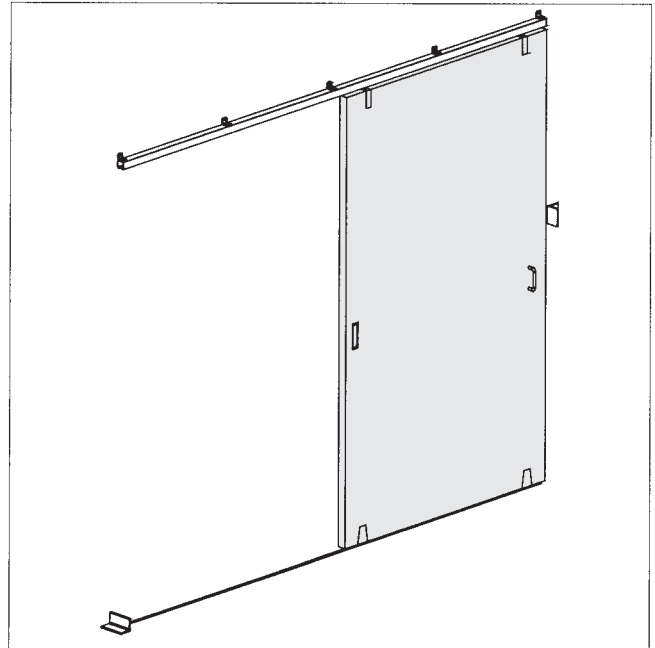
100 2000mm, 3000mm and 4000mm
 94A, 94B, 94P and 94PA 2000mm, 3000mm, 4000mm and 6000mm

100 pre-drilled for lugging into concrete floor.

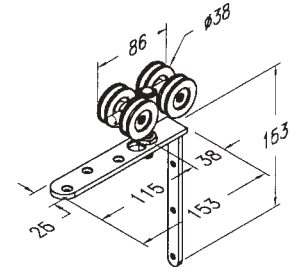
94A and 94B channels drilled and countersunk for screwing to timber floor or attaching to lugs 94L when installing in concrete floor.

94P clips into 94PA to provide a smooth surface for precision bearing to slide against.

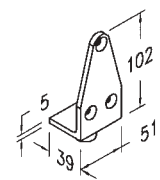
Accessories: Bow Handles, Flush Pulls, Surface Bolts, Flush Bolts, Door Stops.



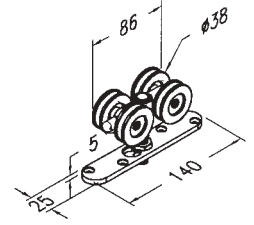
No. 53HN Hanger



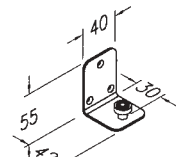
No. 52HN Hanger



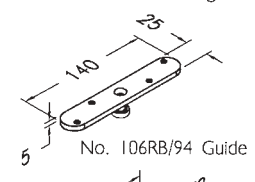
No. 105R/97 Guide



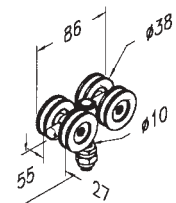
No. 57HN Hanger



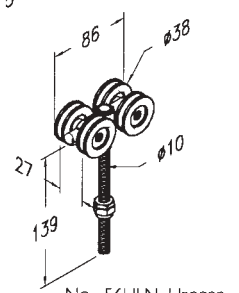
No. 102W/94 Guide



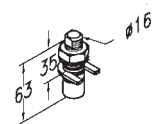
No. 106RB/94 Guide



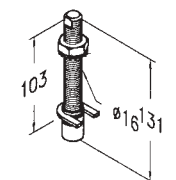
No. 56HN Hanger



No. 56HLN Hanger



No. 104P/97 Guide



No. 104PL/97 Guide

Single Run 250

FOR TOP HUNG STRAIGHT SLIDING DOORS, MAX. 250kg EACH

HENDERSON®

SLIDING & FOLDING DOOR HARDWARE

AUSTRALIA'S WIDEST RANGE

STANDARD TRACK LENGTH	2000	3000	4000	6000
NORMAL BRACKET CENTRES	650 - - 700	750	800	750

FOR HEAVY DOORS, OR THOSE SUBJECTED TO ABNORMAL USE, BRACKET CENTRES SHOULD BE REDUCED TO 500

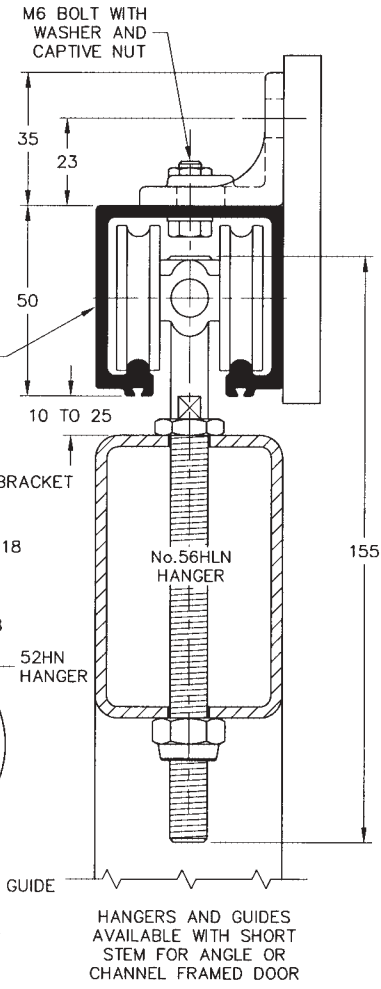
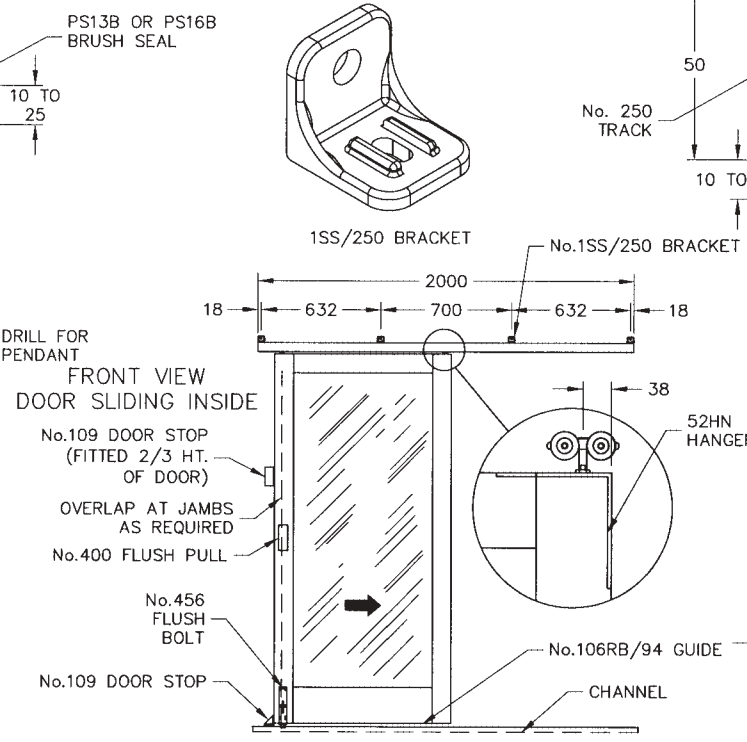
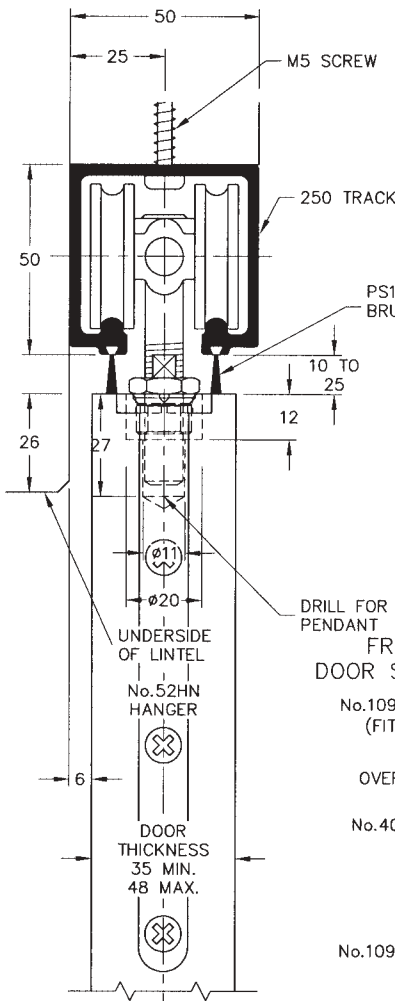
CENTRE LINE OF 1SS/250 BRACKET

END OF TRACK

'E'

18

CENTRE 'E' IS BALANCE OF TRACK LENGTH LESS 18 WITH 1SS/250 BRACKETS



SECTION SCALE 1:2

SECTION SCALE 1:2

