

APPLICATION

- ▶ Suitable for end or centre folding partitions in commercial or public buildings where weight has to be taken at floor level.
- ▶ Leaves can fold to one or both sides of the opening and end folding leaves can be stacked behind a reveal if required.
- ▶ This high quality bottom roller hardware is ideally suited to high class joinery installations.
- ▶ To cover any width of opening, any number of folding units can be used.

DOOR SPECIFICATION

Rail System:	Rollfold 140 End folding	Rollfold 140 Centre folding
For Individual Leaves:		
Max Leaf Height	5500mm	5500mm
Max Leaf Weight	140kg	140kg
Max Leaf Width	900mm	1000mm
Leaf Thickness	54mm	54mm

End folding units consist of four, six or eight leaves and can be hinged to a post.
 End folding floating units consist of six or eight leaves.
 Centre folding units of up to seven full leaves and one half leaf can be hinged to a post.
 Centre folding floating units consist of five or seven full leaves, never three leaves.
 Access should be through either a separate door hinged to a post or a door hinged in one of the folding leaves.

Instruction on leaf width calculation is shown overleaf.
 Clearance between leaves to be 2mm minimum.
 Door leaves should be constructed to provide secure fitting for bottom rollers, hinges and top guide rollers and can be flush, panelled or glazed. Minimum 200mm bottom rails are recommended. On end folding the stiles should be a minimum of 150mm.

HARDWARE SPECIFICATION

Top Guide Channel: 900 with safety lip
 Materials Galvanised steel
 Standard lengths: 2000mm, 3000mm and 4000mm

Top Guide Brackets:
 Soffit fitting 3/900 Pressed steel zinc plated
 Face fitting 1/900 Pressed steel zinc plated
 Fit at 600mm maximum centres.
 Fit additional bracket where folding units stack and at the ends of the top guide channel.

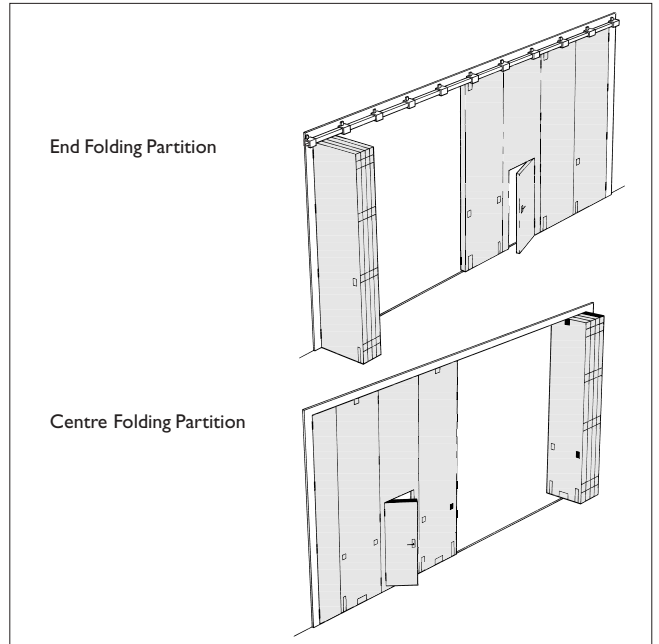
Top Guide Rollers:- 901/919HD
 Top guide rollers are fitted with adjustable nylon rollers.
 Vertical adjustment is simple and positive.
 Plates - brass in satin chrome finish.
 Steel components zinc plated.

Bottom Rollers: 919H For end folding
 909H For centre folding
 Bottom rollers supported on thrust bearings. Bodies - brass in satin chrome finish.

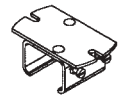
Hinge:
 Butt hinge 100x75 403/3
 Aluminium butt hinge in satin anodised aluminium.
 On leaves up to 3000mm high fit 3 hinges, above 3000mm fit 4 hinges.

Rail: 917 Brass
 Standard lengths 2000mm, 3000mm and 4000mm. Pre-drilled and countersunk for screwing to timber floor or attaching to lugs 917L when installing in concrete floor..

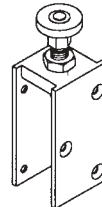
Accessories: Flush Pulls and Flush Bolts.
 Aluminium in satin anodised finish.



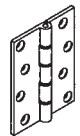
No. 1/900 Bracket



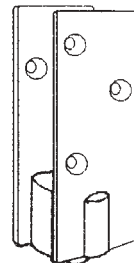
No. 3/900 Bracket



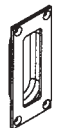
No. 901/919HD
Top Guide Roller



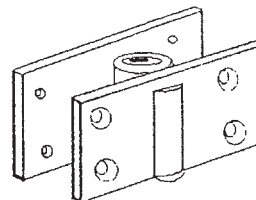
No. 403/3 Butt Hinge



No. 919H Bottom Roller



No. 400 Flush Pull
108 x 48 with
17 mortise



No. 909H Bottom Roller



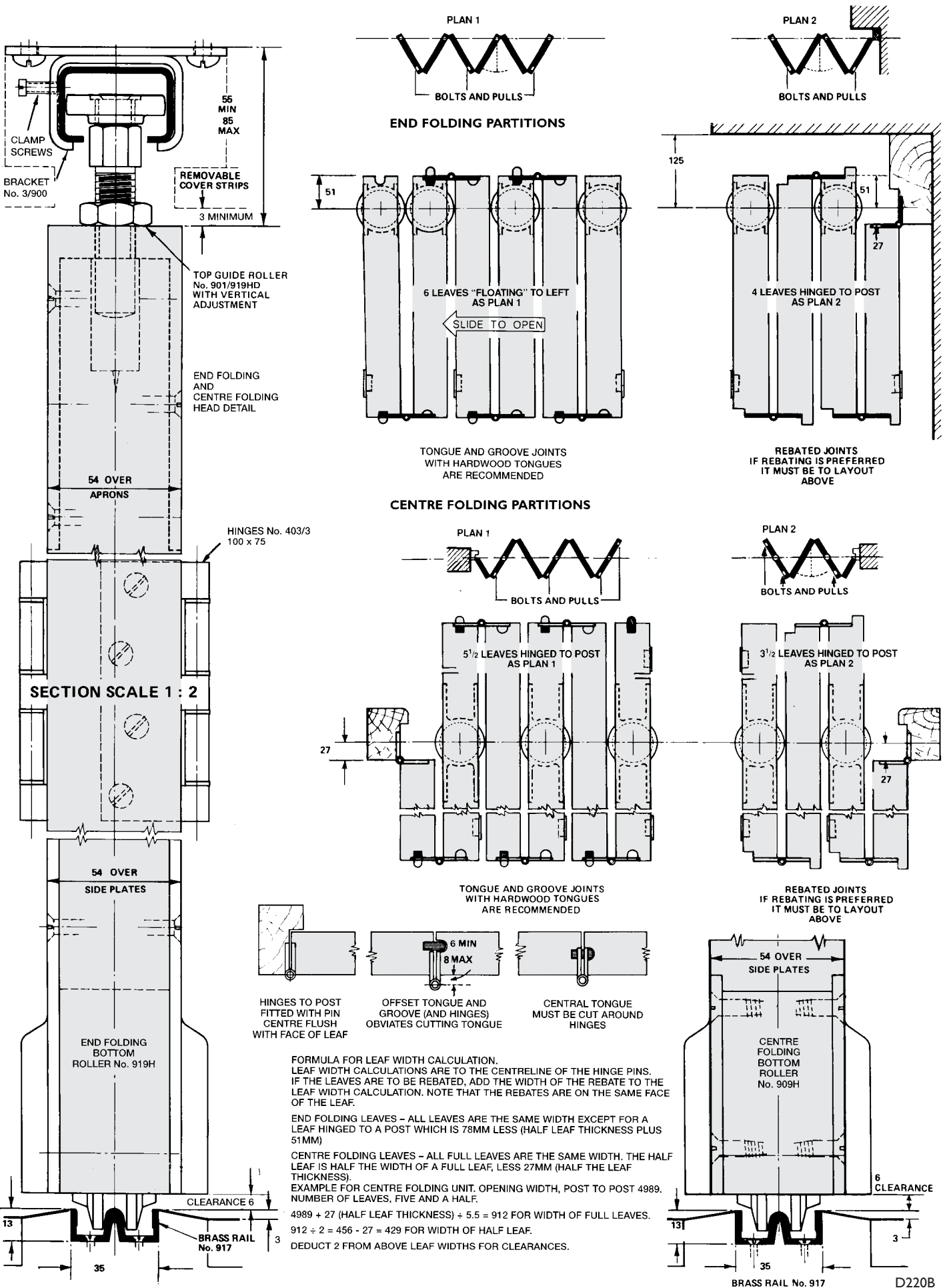
No. 454 Flush Bolt
190 x 41 with
8 mortise

Rollfold 140

FOR BOTTOM ROLLER INTERIOR FOLDING PARTITIONS, MAX. 140kg EACH LEAF

HENDERSON®

SLIDING & FOLDING DOOR HARDWARE
AUSTRALIA'S WIDEST RANGE



HENDERSON RMD

Door Hardware Division of
RMD PRESS CO. PTY LTD.
ACN 004 313 937

© COPYRIGHT HENDERSON RMD

© HENDERSON IS A REGISTERED TRADEMARK OF PC HENDERSON LTD (UK)

