

**APPLICATION**

- ▶ Rollagate is designed for projects that can accept a rail set in the driveway but must have no top guide system across the opening.
- ▶ Gates may be either single or bi-parting.
- ▶ Hinged door for easy access may be incorporated into a sliding gate.

**GATE SPECIFICATION**

Rail System:	Rollagate 350	Rollagate 800
For Individual Gates:		
Max Gate Weight – motorised	175kg	400kg
– manual	350kg	800kg
Gate Thickness – timber gate	44-54mm	51-63mm
Min Gate Thickness – metal gate	50mm	60mm

The gate should overlap the opening on the sliding side by at least 1000mm to enable the two Top Guide Rollers to be placed as far apart as possible. On timber gates, the Bottom Rollers should be positioned clear of the joint between the bottom rail and stiles. The bottom rail of the gate must be at least 230mm deep on Rollagate 350 and 300mm deep on Rollagate 800. Metal gates should be fabricated from aluminium or steel sections, welded or bolted. The Bottom Rollers should be positioned securely in the bottom section.

The Bottom Rail must be set level and may be recessed for protection from forklifts.

**HARDWARE SPECIFICATION**

**Top Guide Rollers (2 per gate):** 703 Side wall fitting  
Material: Steel, in zinc dichromate finish.

The Top Guide Rollers should be fitted to the side wall, or to posts, as far apart as possible where the gate overlaps the side wall, as described above under Gate Specification.

An alternative method to top guiding the gate is to fit 99 Top Guide Channel to the side wall with 31 and 31X Top Guide Brackets. Two Top Guide Rollers are fitted as far apart as possible on the overlap section of the gate – 53/99 for timber gates and 104/99 for metal gates.

Another option is to fit the 99 Top Guide Channel to the top rail of the gate and to fit two 104/99 Top Guide Rollers on posts or off the wall, as far apart as possible in the overlap area.

The specifications for these items are –

**Top Guide Channel:** 99 (3mm thick)  
Material Galvanised steel  
Standard lengths 2000mm, 3000mm and 4000mm  
Drilled for fitting to Top Guide Brackets.

**Top Guide Brackets:**  
Face fitted only  
For single run - intermediate 31 Pressed steel zinc plated  
  - jointing 31X Pressed steel zinc plated  
Fit at 900mm maximum centres.

**Top Guide Rollers (2 per door):** 53/99 For timber doors  
  104/99 For metal doors

Brass rollers with steel components zinc plated.

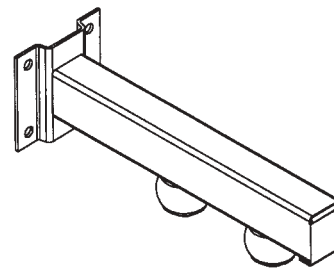
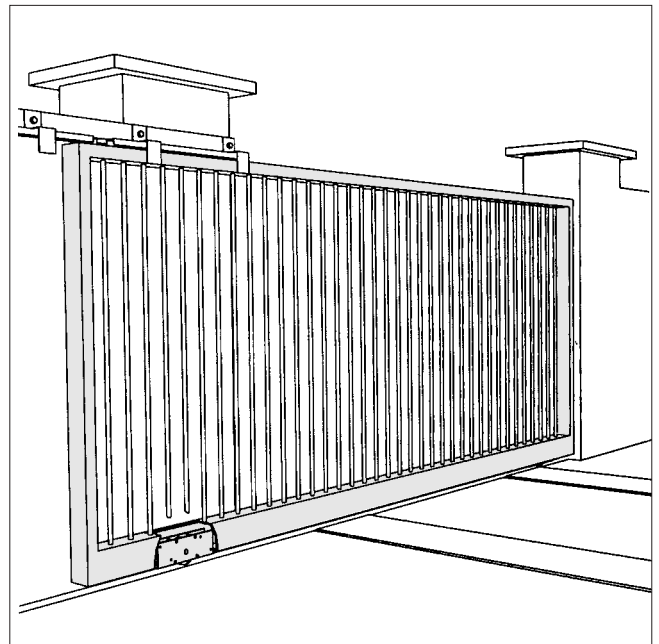
Either of the above top guide systems may be used with the following Bottom Rollers, Bottom Rail and accessories

Bottom Rollers (2 per gate):	350kg	800kg
For timber gates	2	3
For metal gates	1S	3S
For metal gates (wheel and axle assembly)	ISU	3SU

Zinc plated with maintenance free sealed for life roller bearings.

**Bottom Rail:** 298 (4mm thick)  
Material Galvanised steel  
Standard lengths 2000mm, 3000mm and 4000mm.

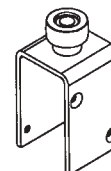
**Accessories:** Bow Handles, Flush Pulls, Surface Bolts, Flush Bolts and Door Stops in zinc plated finish.



No. 703 Top Guide Roller



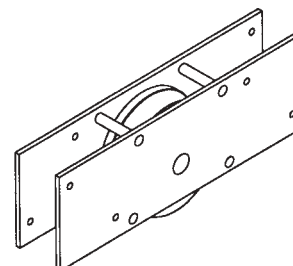
No. 104/99 Top Guide Roller



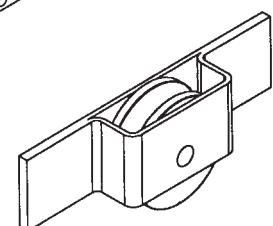
No. 53/99 Top Guide Bracket



No. ISU or No. 3SU Bottom Roller – wheel only



No. 2 or No. 3 Bottom Roller



No. 1S or 3S Bottom Roller

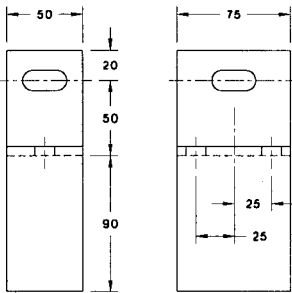
# Rollagate 350 & 800

FOR BOTTOM ROLLER SLIDING GATES, MAX. 800KG EACH

# HENDERSON®

SLIDING & FOLDING DOOR HARDWARE

AUSTRALIA'S WIDEST RANGE



SCALE 1:5

No.31 INTERMEDIATE SAFETY BRACKET  
No.31X JOINTING SAFETY BRACKET

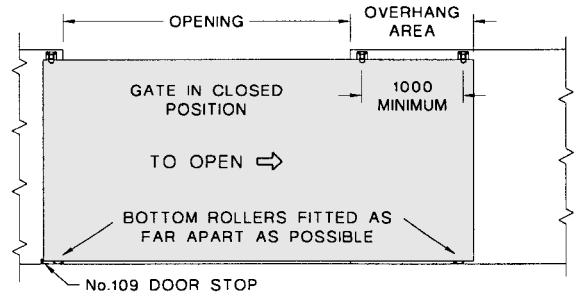
'ROLLAGATE' allows an opening to be covered by a single gate or with bi-parting gates, without the need for a top guide channel above the opening.

To achieve this, the gate must be wider than the opening, or in the case of bi-parting gates wider than half the opening, by at least one metre on one side. This is called the overhang area.

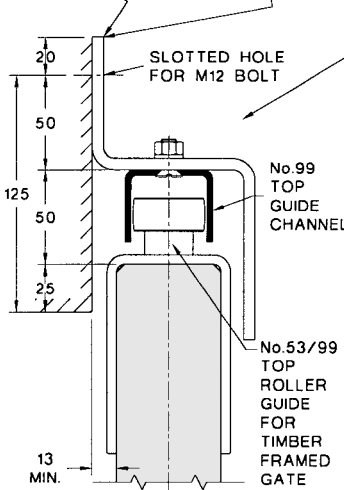
Two top guide rollers are then positioned as far apart as possible, in the overhang area, to support the gate whilst it is in motion.

When a single gate is closed, a third top guide roller is positioned to support the gate in the closed position. On bi-parting gates, the meeting stiles of the gates should be designed to interlock so as to support each other when closed.

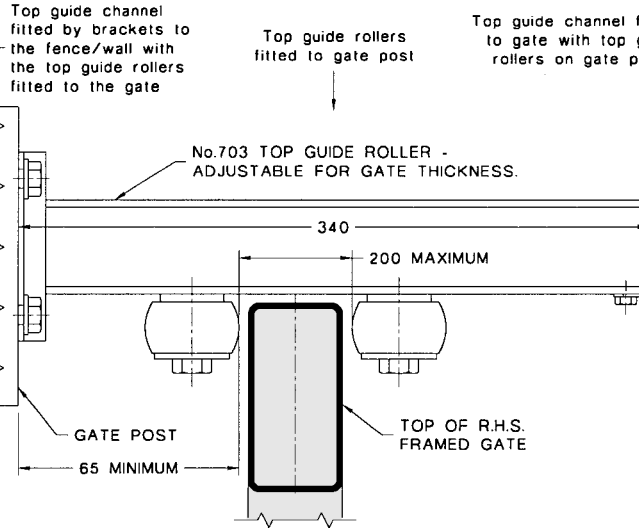
TOP GUIDE ROLLERS OR SAFETY BRACKETS MUST BE SECURELY FITTED TO GATE POSTS, NOT TO WALL, UNLESS WALL IS OF STURDY CONSTRUCTION.



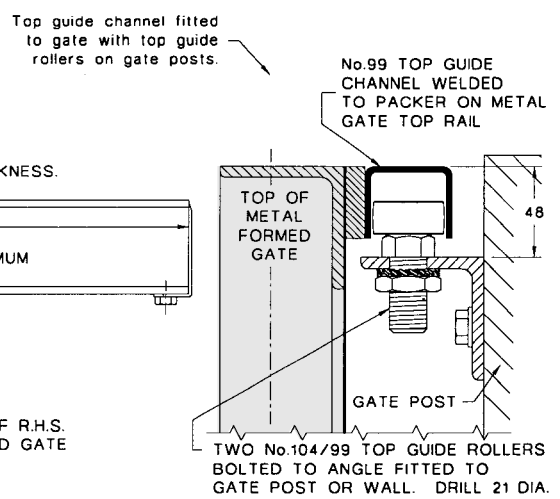
### THREE ALTERNATIVE METHODS OF TOP GUIDING THE GATE.



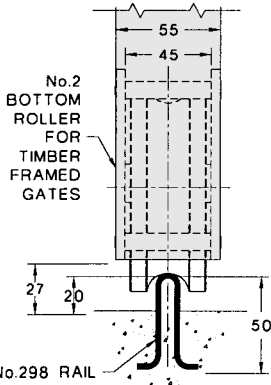
SECTION SCALE 1:4



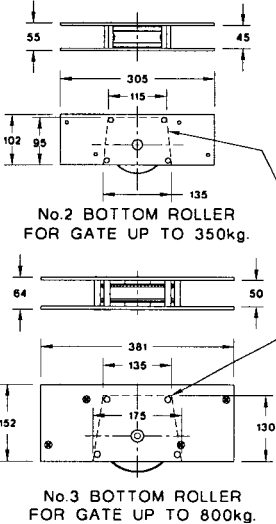
SECTION SCALE 1:4



SECTION SCALE 1:4

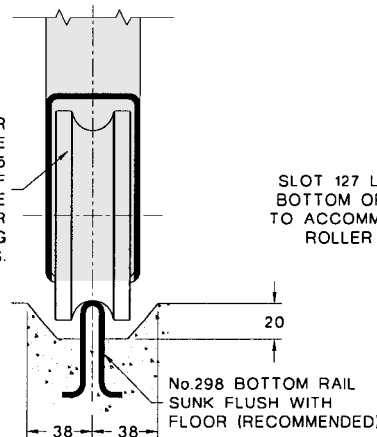


### ALTERNATIVE BOTTOM ROLLERS FOR TIMBER GATES

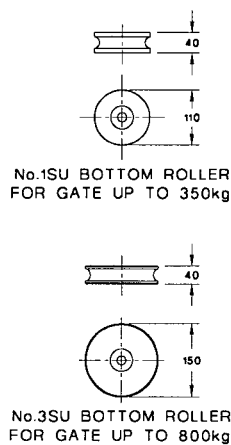


No.3 BOTTOM ROLLER FOR GATE UP TO 800kg.

No.1SU BOTTOM ROLLER HOUSED IN R.H.S. FRAME OF GATE. CUT SLOT 95 LONG IN BOTTOM OF R.H.S. ALTERNATIVE No.3SU BOTTOM ROLLER REQUIRES SLOT 130 LONG IN BOTTOM OF R.H.S.

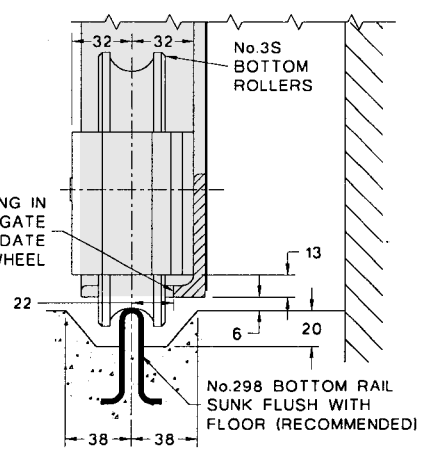


### ALTERNATIVE BOTTOM ROLLERS FOR METAL GATES

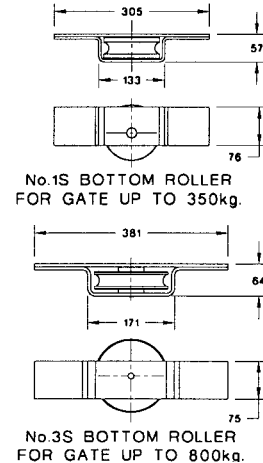


No.1S BOTTOM ROLLER FOR GATE UP TO 350kg.

No.3SU BOTTOM ROLLER FOR GATE UP TO 800kg.



### ALTERNATIVE BOTTOM ROLLERS FOR METAL GATES



No.1S BOTTOM ROLLER FOR GATE UP TO 350kg.

No.3S BOTTOM ROLLER FOR GATE UP TO 800kg.

## HENDERSON RMD

Door Hardware Division of  
RMD PRESS CO. PTY LTD.

ACN 004 313 937

© COPYRIGHT HENDERSON RMD

© HENDERSON IS A REGISTERED TRADEMARK OF PC HENDERSON LTD (UK)



C120B

SALES OFFICES IN ALL STATES