

APPLICATION

- ▶ Suitable for residential and light commercial end folding partitions, with all leaves of equal width.
- ▶ Leaves can fold to one or both sides of the opening.
- ▶ Pivot hardware enables an end folding internal partition to be designed using standard width door leaves with no cutting down of the leaf adjacent to post.
- ▶ To cover any width opening, any number of folding units can be used.

DOOR SPECIFICATION

Track System:	Pivotfold 45	Pivotfold 75
For Individual Leaves:		
Max Leaf Height	3000mm	3300mm
Max Leaf Weight	45kg	75kg
Max Leaf Width	900mm	900mm
Min Leaf Thickness	35mm	44mm

Use Pivotfold only if leaves must be of equal width. Endfold is preferred because the first leaf is hinged to a post. See Data Sheet D110.

The folding unit is not hinged to a post, but is pivoted in the track and off the floor.

End folding units of up to eight leaves can be pivoted to each side of the opening. A pivoted unit with an odd number of leaves provides a hinged access door.

End folding floating units consist of four, six or eight leaves.

Clearance between leaves to be 2mm minimum.

Door leaves should be constructed to provide secure fitting for the pivot sets, hangers, hinges and guides and can be flush, panelled or glazed.

HARDWARE SPECIFICATION

Track:	180	250
Material	Aluminium	Aluminium
Standard lengths	2000mm, 3000mm, 4000mm and 6000mm.	

Bracket (Face Fix):

Bracket 316 Stainless Steel	ISS/250	ISS/250
-----------------------------	---------	---------

A bracket is located close to the pivot with a bracket 300mm away to support track where folding units stack. Place a bracket at the other end of the track, at each join in the track and space the other brackets at 900mm maximum centres.

Hangers:

End leaves	21GN	21HN
Intermediate Leaves	21/4GN	21/4HN

Hangers are fitted with nylon tyre wheels on ball race bearings. Vertical adjustment is simple and positive.

Pivot Set:

Top and bottom pivots	21HP	21HP
-----------------------	------	------

Guide:

With precision bearings	21RB/94	21RB/94
-------------------------	---------	---------

All steel parts to hangers, pivots and guides are stainless steel.

Hinge:

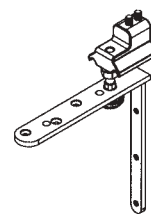
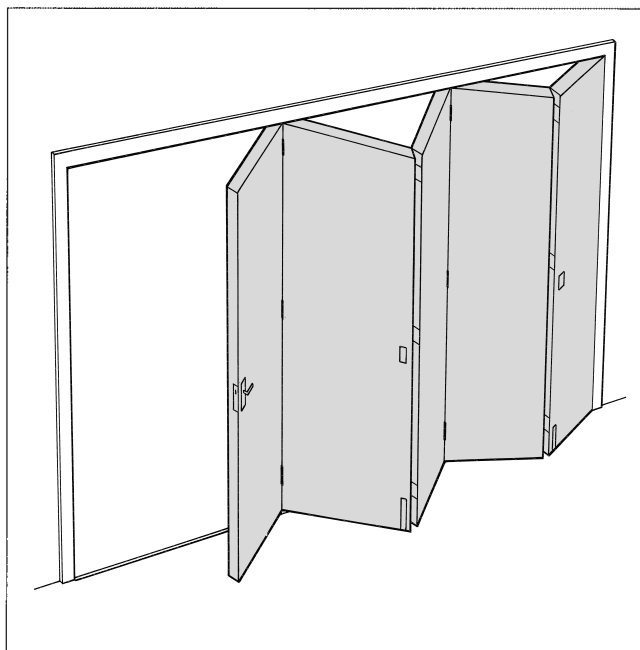
Butt hinge	404/2	404/3
404/2: 85x60, 404/3: 100x75		

Channels:

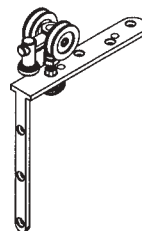
Aluminium	94A	94A
Brass	94B	94B
Polypropylene	94P	94P
Aluminium	94PA	94PA

Standard lengths 2000mm, 3000mm, 4000mm and 6000mm
Drilled and countersunk for screwing to timber floor or attaching to lugs 94L when installing in concrete floor. 94PA used to provide support for 94P channel, 94P not to be used on its own.

Accessories: Flush Pulls and Flush Bolts



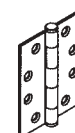
No. 21HP Pivot Set - Top Assembly



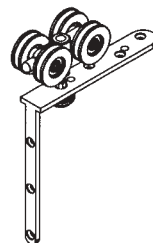
No. 21 Hanger



No. 400 Flush Pull
108 x 48 with 17
mortise



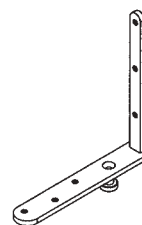
No. 404 Butt Hinge



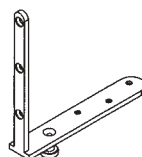
No. 21/4 Hanger



No. 456 Flush Bolt
190 x 41 with 10
mortise and 45 throw.



No. 21HP Pivot Set - Bottom Assembly



No. 21RB/94 Guide

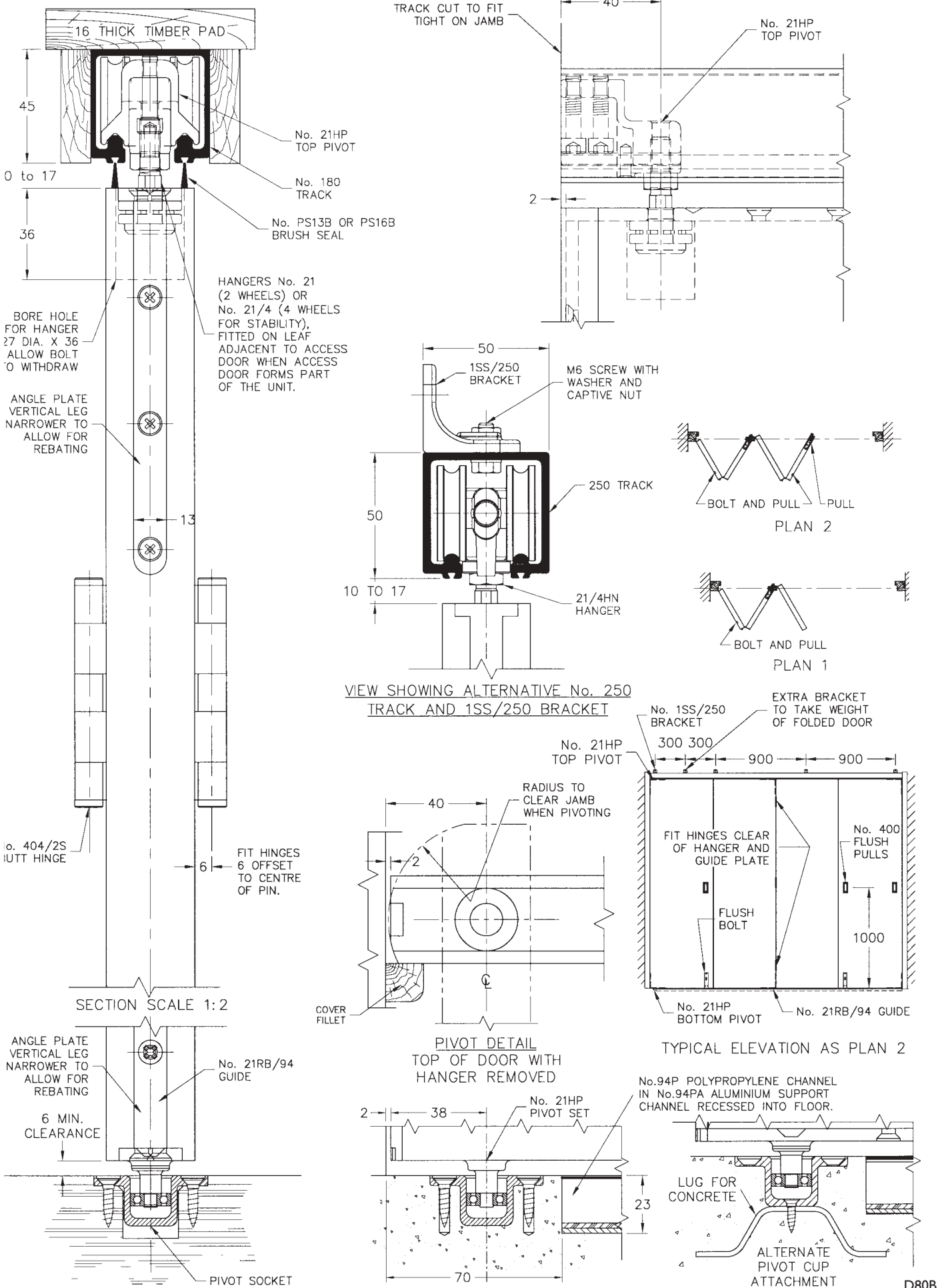
Pivotfold 45 & 75

FOR TOP HUNG INTERIOR END FOLDING PARTITIONS, MAX. 75kg EACH LEAF

HENDERSON®

SLIDING & FOLDING DOOR HARDWARE

AUSTRALIA'S WIDEST RANGE



HENDERSON RMD

Door Hardware Division of
RMD PRESS CO. PTY LTD.
 ACN 004 313 937

© COPYRIGHT HENDERSON RMD

© HENDERSON IS A REGISTERED TRADEMARK OF PC HENDERSON LTD (UK)



D80B