

APPLICATION

- ▶ For built-in furniture, wardrobes, cupboards, etc in commercial applications such as hotels, hospitals and offices.
- ▶ On heavy use applications or where more than three doors are required, fit two only 113N/81 guides per door and 81 channel beneath each line of doors.

DOOR SPECIFICATION

Track System: Double Top 45
For Individual Doors:
Max Door Weight 45kg
Door Thickness 16-40mm
 Framed timber doors or doors made from medium density fibreboard (MDF) must have provision for hangers to be screwed securely to the back face of the doors.

STANDARD FITTING PACKS – DOOR FITTINGS ONLY, NO TRACK

Suitable for sliding two or three doors within the opening width.

Pack No.	Suitable for	Contents
2WHD	2 Doors	Two 220HD hangers, two 221HD hangers, two 101N sawcut guides, one 28N door stop, all screws and fitting instructions.
3WHD	3 Doors	Two 220HD hangers, two 221HD hangers, two 222HD hangers, four 101N sawcut guides, two 28N door stops, all screws and fitting instructions.

Select the appropriate length of 20HD track to suit the opening width for use with the above pack(s).

HARDWARE SPECIFICATION

Track: 20HD
Material: Aluminium
Standard lengths: 1200mm, 1500mm, 1800mm, 2400mm and 3000mm

Hangers (2 per door): 220HD, 221HD and 222HD
 Nylon tyred ball race wheel with zinc dichromate finished plates face fitted to the back of the door. Vertical adjustment 10mm.

Door Stop: 28N
 Nylon safety door stop prevents fingers being jammed on bi-passing doors.

Guide: 101N
 Nylon sawcut guide included in sets and packs. Alternative guides available, as shown here and overleaf.

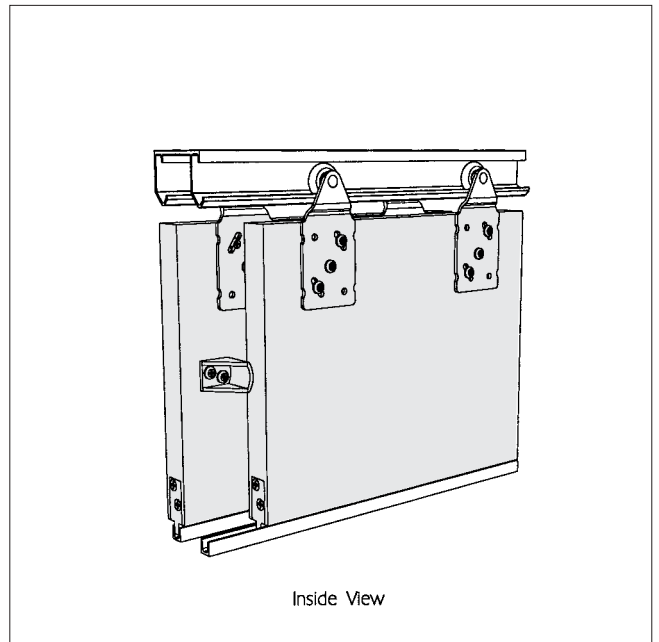
Accessories:
Finger Pull: 26
 Finger pull, chrome plated brass. Push-fit into 32mm diameter by 10mm deep recess.

Guide: 24/25N
 Guide white nylon. Adjustable for any door thickness, no need to groove the doors.

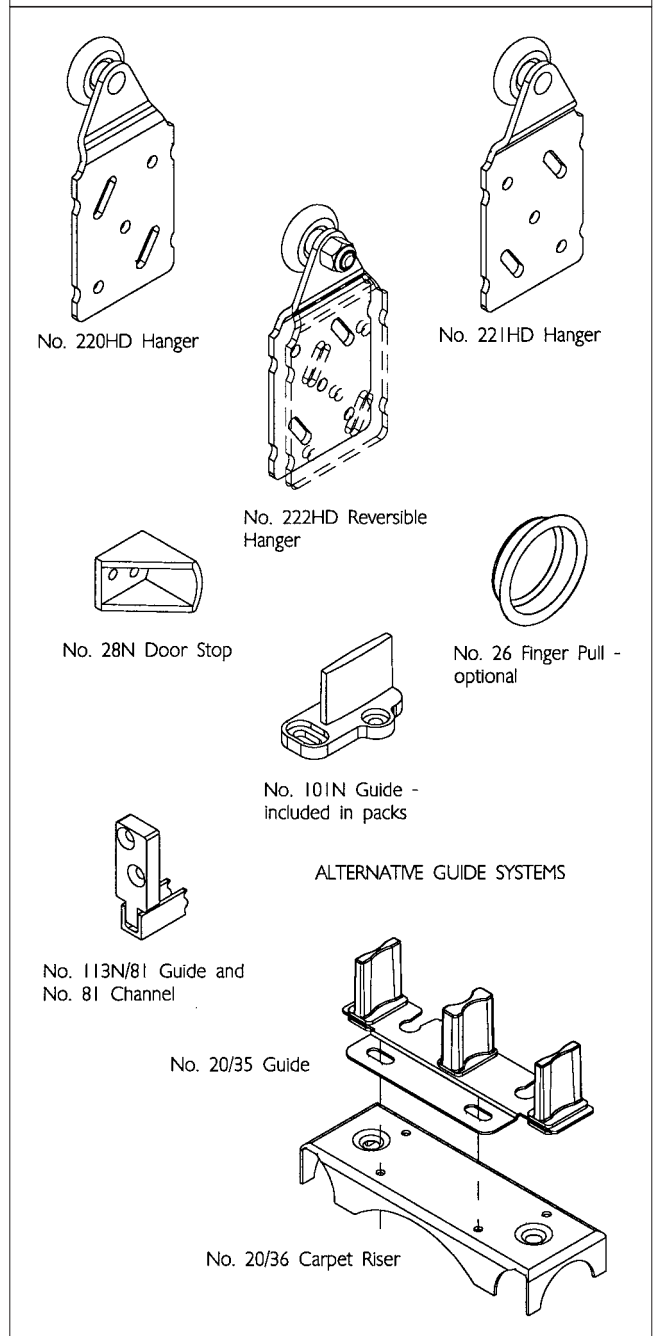
Guide: 20/35
 Guide nylon and zinc dichromated steel. Suitable for 20mm or 35mm thick doors allowing fine adjustment for variations in thickness and straightness of doors, no need to groove the doors.

Carpet Riser: 20/36
 Carpet riser, in zinc dichromated steel, fits beneath the 20/35 guide and eliminates cutting the carpet.

Channel and Guide: 81 and 113N/81
 For heavy duty applications or where more than 3 doors are required per opening. 81 channel, aluminium, available in 1200mm, 1500mm, 1800mm, 2400mm, 3000mm and 3600mm lengths. 113N/81 guides in white nylon.



Inside View



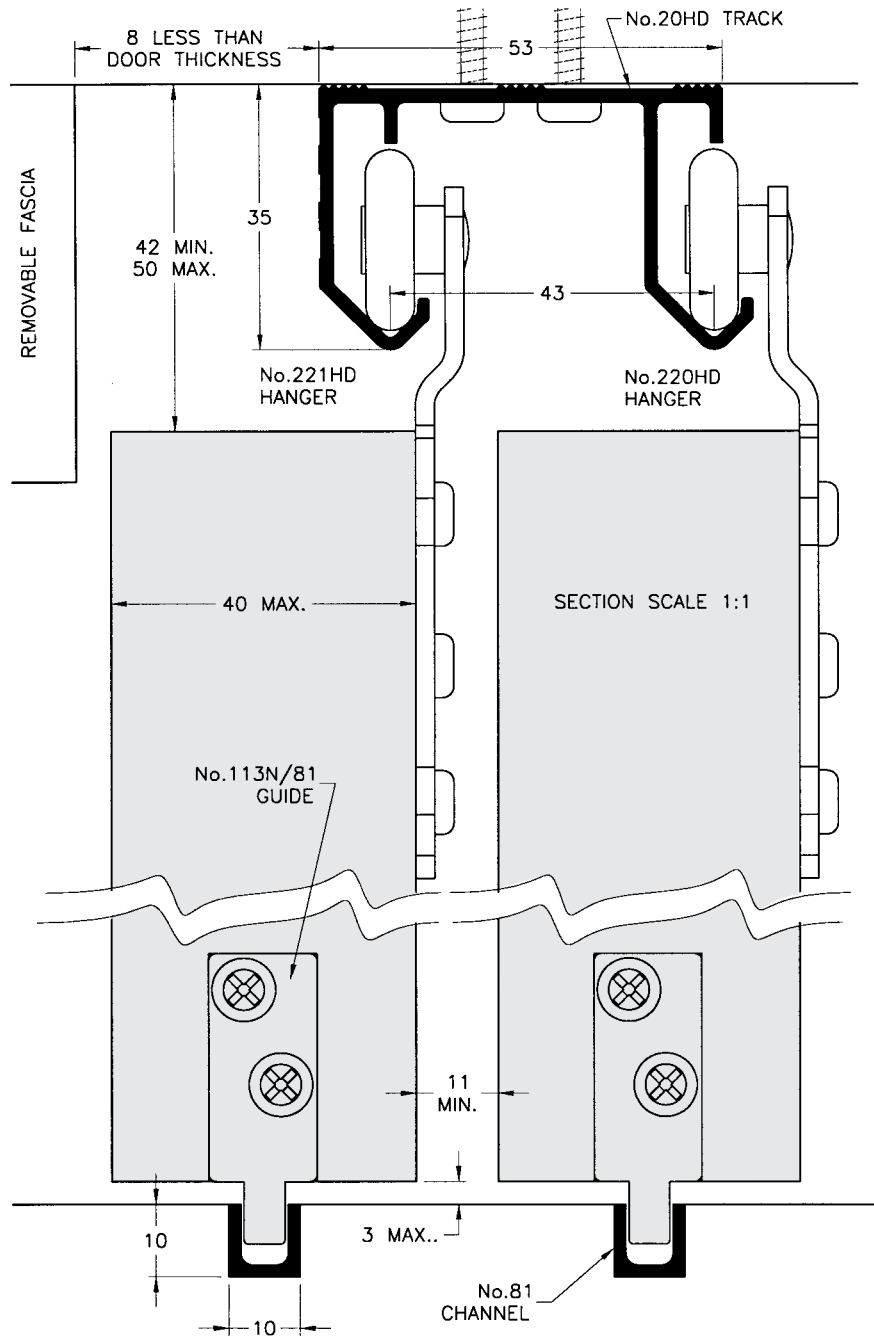
Double Top 45

FOR TOP HUNG SLIDING WARDROBE DOORS, MAX. 45kg EACH

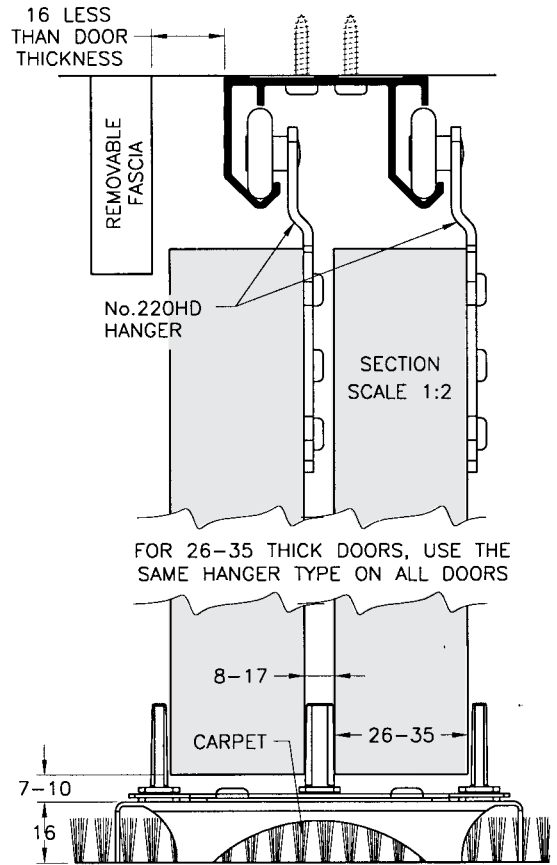
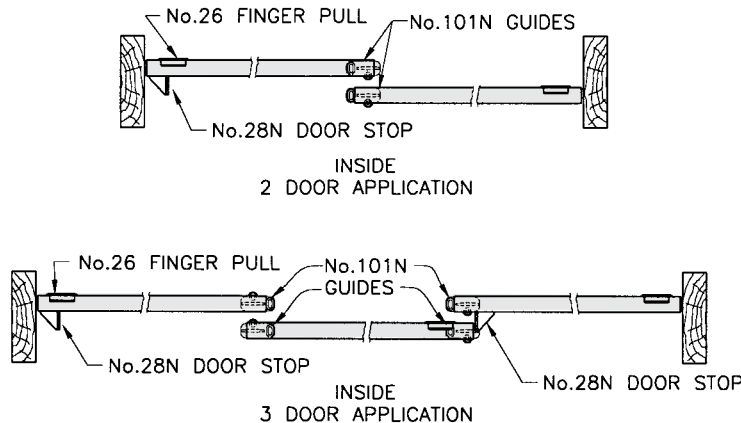
HENDERSON®

SLIDING & FOLDING DOOR HARDWARE

AUSTRALIA'S WIDEST RANGE

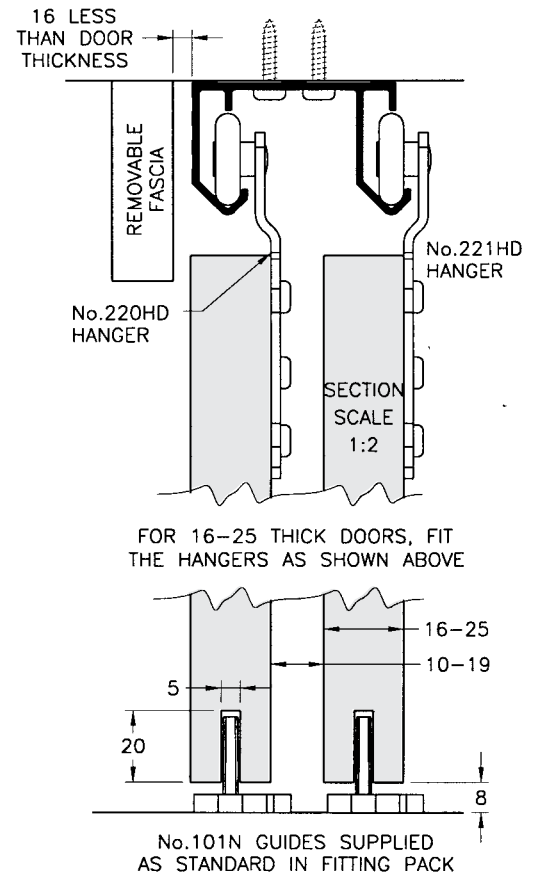


No.113N/81 GUIDES AND No.81 CHANNELS ARE RECOMMENDED FOR HEAVY DUTY APPLICATIONS OR WHERE THERE ARE MORE THAN THREE DOORS PER OPENING.



FOR 26-35 THICK DOORS, USE THE SAME HANGER TYPE ON ALL DOORS

No.20/35 GUIDE ONLY FOR DOORS 20 OR 35 THICK MOUNTED ON No.20/36 CARPET RISER



FOR 16-25 THICK DOORS, FIT THE HANGERS AS SHOWN ABOVE

No.101N GUIDES SUPPLIED AS STANDARD IN FITTING PACK

B50B

HENDERSON RMD

Door Hardware Division of
RMD PRESS CO. PTY LTD.
ACN 004 313 937

© COPYRIGHT HENDERSON RMD

© HENDERSON IS A REGISTERED TRADEMARK OF PC HENDERSON LTD (UK)



SALES OFFICES IN ALL STATES