

APPLICATION

- ▶ Arcade high quality bottom roller hardware is designed specifically for aluminium framed glazed internal retail and display applications where the weight has to be taken at floor level.
- ▶ Options of centre and end folding partitions are available. Both centre folding and end folding leaves can fold to one or both sides of the opening and end folding leaves can be stacked behind a reveal if required.
- ▶ Two or three leaf end folding units can fold 180 degrees. Consult the Technical Department of Henderson RMD.
- ▶ To cover any width of opening, any number of folding units can be used.

DOOR SPECIFICATION

Rail System:	Arcade 70 End folding	Arcade 70 Centre folding
--------------	--------------------------	-----------------------------

For Individual Leaves:

Max Leaf Height	3600mm	3600mm
Max Leaf Weight	70kg	70kg
Max Leaf Width	900mm	1000mm
Min Leaf Thickness	44mm	44mm

End folding units consist of four, six or eight leaves and can be hinged to a jamb.

End folding floating units consist of six or eight leaves.

Centre folding units of up to seven full leaves and one half leaf can be hinged to a jamb.

Centre folding floating units consist of five or seven full leaves, never three leaves.

Where access is required a separate door should be hinged to a post.

Instruction on leaf width calculation is shown overleaf.

Clearance between leaves is essential and amount depends upon the type of hinges used.

Door leaves should be constructed from proprietary aluminium section rails and stiles with a glazed infill.

HARDWARE SPECIFICATION

Top Guide Channel:	900 with safety lip
Material	Galvanised steel
Standard lengths	2000mm, 3000mm and 4000mm

Top Guide Brackets:		
Soffit fitting	3/900	Pressed steel zinc plated
Face fitting	1/900	Pressed steel zinc plated

Fit at 900mm maximum centres.

Fit additional bracket where folding units stack and at the ends of the top guide channel.

Top Guide Roller:	902	Concealed
--------------------------	-----	-----------

Top guide rollers are fitted with adjustable nylon rollers.

Vertical adjustment is simple and positive.

Bottom Roller:	922	Concealed
-----------------------	-----	-----------

Bottom rollers supported on thrust bearings.

Both top guide rollers and bottom rollers are designed to suit the rebate in standard aluminium door rails.

Hinges:

It is recommended that proprietary hinges are used to suit the aluminium rails and stile used to construct the leaves.

On leaves up to 3000mm high fit 3 hinges, above 3000mm fit 4 hinges.

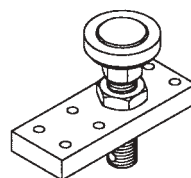
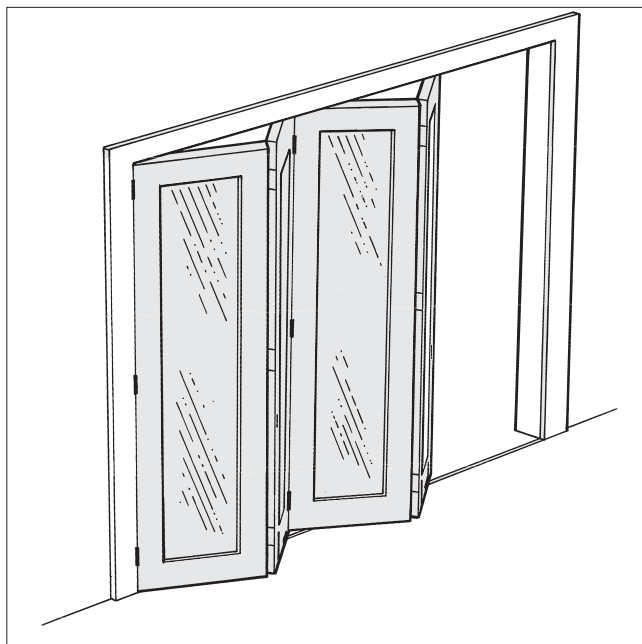
Rail:	918	Brass
--------------	-----	-------

Standard lengths 2000mm, 3000mm and 4000mm.

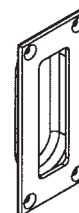
Pre-drilled and countersunk for screwing to timber floor or attaching to lugs 918L when installing in concrete floor.

Accessories:	Flush Pulls and Flush Bolts
---------------------	-----------------------------

Aluminium in satin anodised finish.



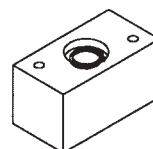
No. 902 Top Guide Roller



No. 400 Flush Pull 108x48 with 17 mortise



No. 454 Flush Bolt 190x41 with 8 mortise



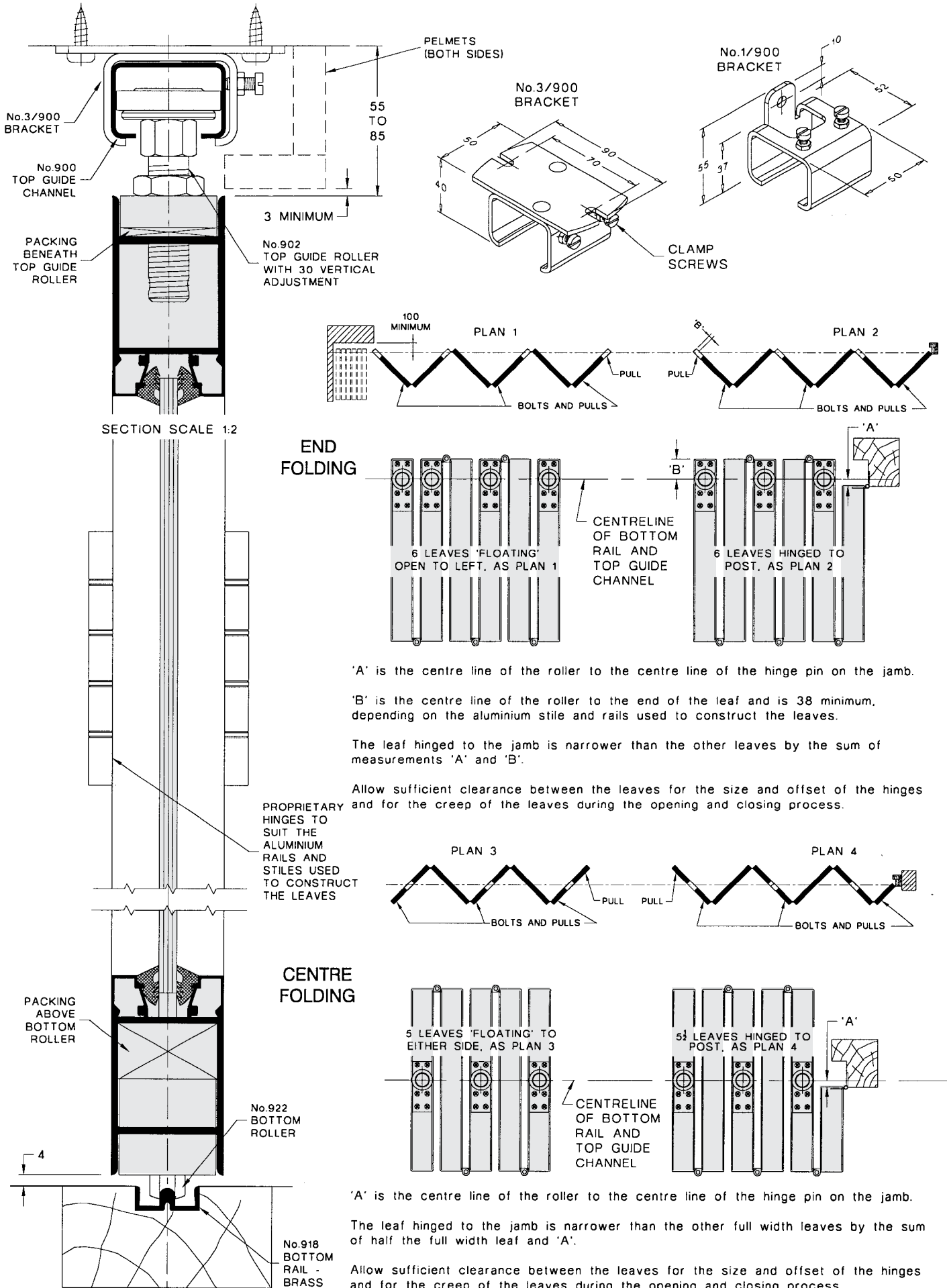
No. 922 Bottom Roller

Arcade 70

FOR BOTTOM ROLLER INTERIOR FOLDING ALUMINIUM FRAMED LEAVES, MAX. 70kg EACH

HENDERSON®

SLIDING & FOLDING DOOR HARDWARE
AUSTRALIA'S WIDEST RANGE



D230B

HENDERSON RMD

Door Hardware Division of
RMD PRESS CO. PTY LTD.

ACN 004 313 937

© COPYRIGHT HENDERSON RMD

© HENDERSON IS A REGISTERED TRADEMARK OF PC HENDERSON LTD (UK)

