

APPLICATION

- ▶ Sterling 800 is designed for a wide range of commercial and industrial applications.
- ▶ The bottom roller design is suited to applications where the supporting structure or lintel is insufficient for the weight of the door, or where headroom is limited.
- ▶ The top guide channel may be soffit or face fitted.
- ▶ To cover any width of opening, any number of doors can be used on single or multiple lines of rail.
- ▶ To accommodate different building designs, doors can slide to one or both sides.
- ▶ Hinged door for easy access may be incorporated into a sliding door.
- ▶ Where doors are fitted externally, a canopy is recommended to protect the top guide channel, brackets and top guide rollers.

DOOR SPECIFICATION

Rail System: Sterling 800

For Individual Doors:

Max Door Height	5200mm
Max Door Weight	800kg
Door Thickness - Timber Door	51-63mm
Min Door Thickness - Metal Door	60mm

For ease of operation it is recommended that the door width should be at least 50% of the door height.

Timber doors may be partly or fully glazed, or framed, ledged and braced for industrial applications. On timber doors, rollers should be positioned clear of the joint between the bottom rail and stiles. Doors must be constructed with a bottom rail of minimum depth 300mm.

Metal doors should be framed and braced using steel angle and clad with sheeting as required. On metal doors, the rollers should be positioned securely in the bottom door frame section by welding or bolting.

The bottom rail must be set level and may be recessed for protection from traffic.

HARDWARE SPECIFICATION

Top Guide Channel:	99 (3mm thick)
Material	Galvanised steel
Standard lengths	2000mm, 3000mm and 4000mm
Drilled for soffit fitting, or to accept top guide brackets.	

Top Guide Brackets:

Face fitted only

For single run - intermediate	31	Pressed steel zinc plated
- jointing	31X	Pressed steel zinc plated
For double run - intermediate	35	Pressed steel zinc plated
- jointing	35X	Pressed steel zinc plated

Fit at 900mm maximum centres.

Top Guide Rollers (2 per door):	53/99	For timber doors
	104/99	For metal doors

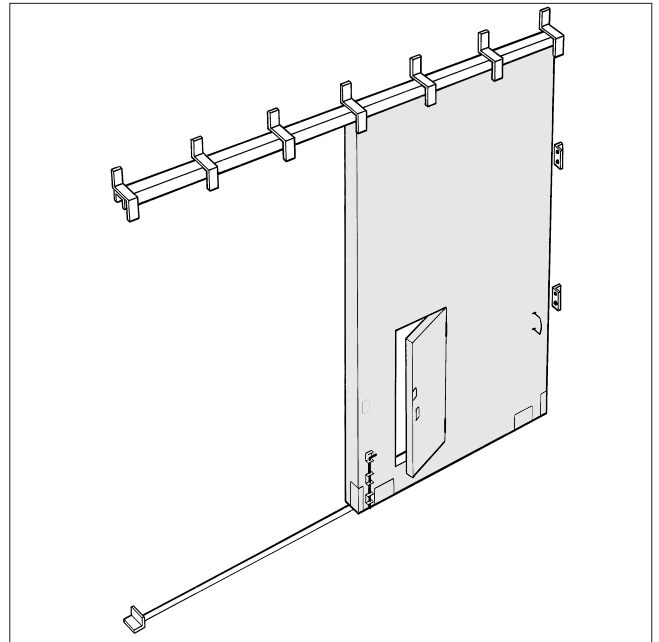
Brass rollers with steel components zinc plated.

Bottom Rollers (2 per door):	No. 3	For timber doors
	No.3S	For metal doors
	No.3SU	For metal doors (wheel only)

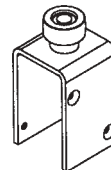
Zinc plated with maintenance free sealed for life roller bearing.

Bottom Rail:	298 (4mm thick)
Material	Galvanised steel
Standard lengths	2000mm, 3000mm and 4000mm.

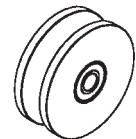
Accessories: Bow Handles, Flush Pulls, Surface Bolts, Flush Bolts and Door Stops in zinc plated finish.



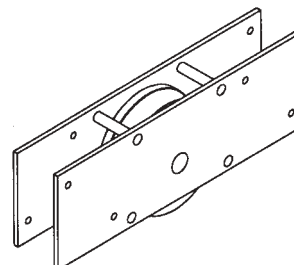
No. 104/99 Top Guide Roller



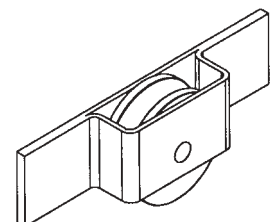
No. 53/99 Top Guide Roller



No. 3SU Bottom Roller – wheel only



No. 3 Bottom Roller



No. 3S Bottom Roller

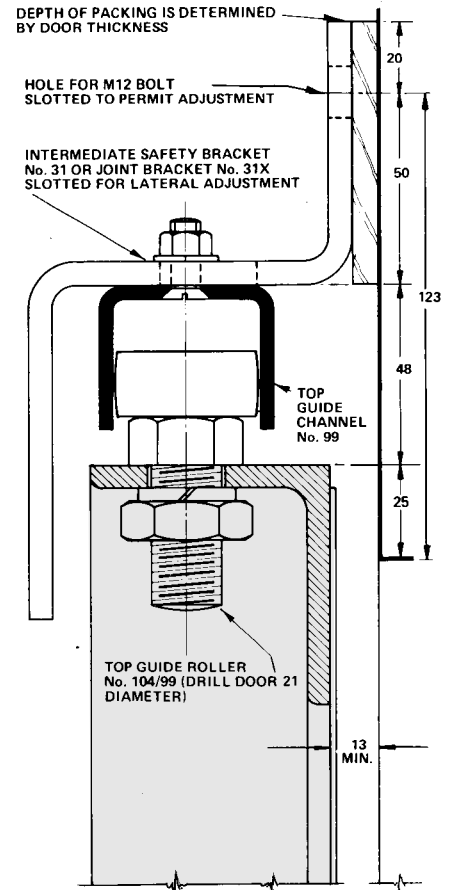
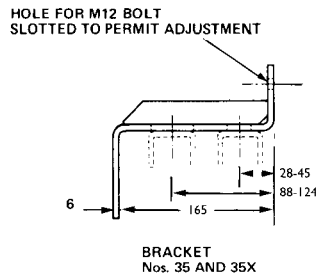
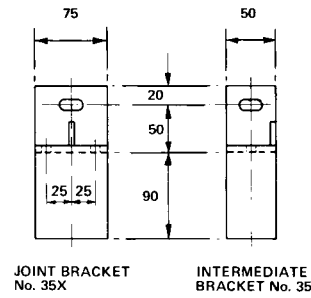
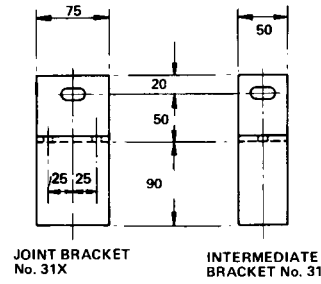
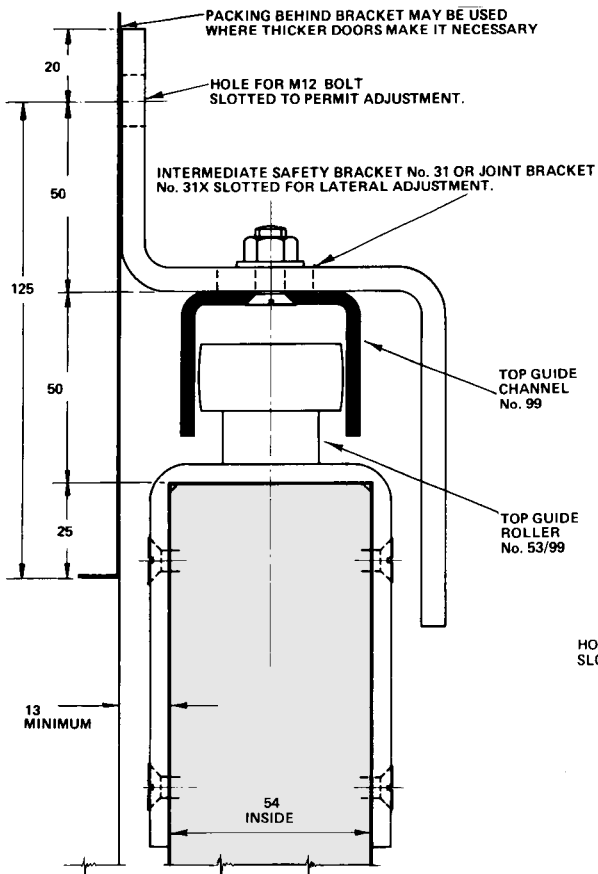
Sterling 800

FOR BOTTOM ROLLER SLIDING INDUSTRIAL DOORS, MAX. 800kg EACH

HENDERSON®

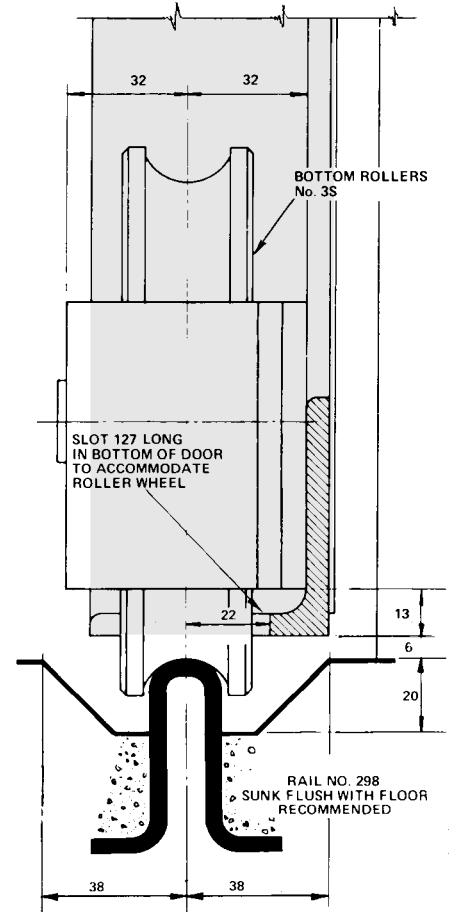
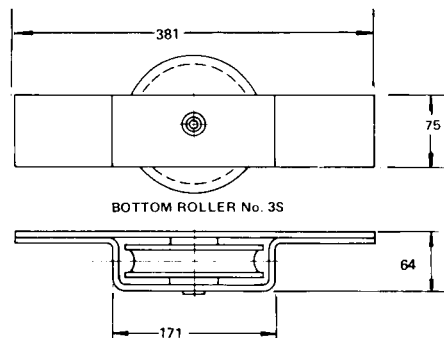
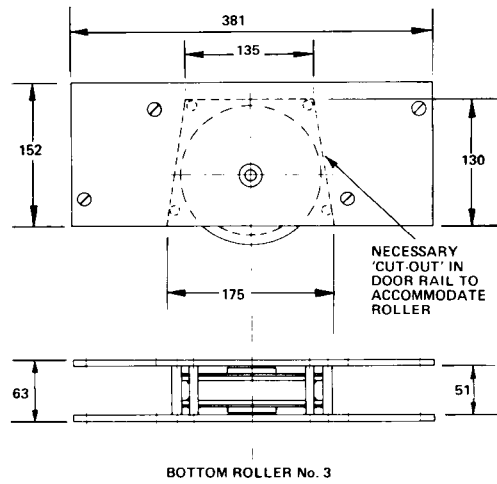
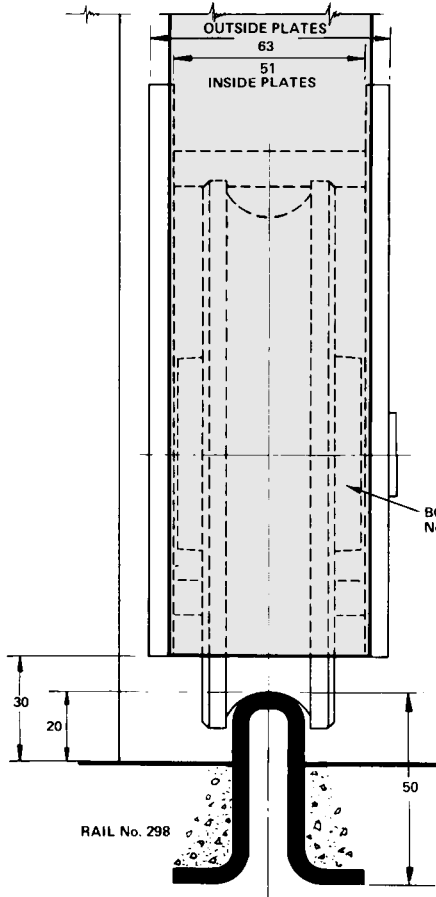
SLIDING & FOLDING DOOR HARDWARE

AUSTRALIA'S WIDEST RANGE



SECTION SCALE 1 : 2

SECTION SCALE 1 : 2



HENDERSON RMD

Door Hardware Division of
RMD PRESS CO. PTY LTD.

ACN 004 313 937

© COPYRIGHT HENDERSON RMD

© HENDERSON IS A REGISTERED TRADEMARK OF PC HENDERSON LTD (UK)



SALES OFFICES IN ALL STATES

C90B