

**APPLICATION**

- ▶ Designed to allow very heavy and large industrial doors to be easily moved.
- ▶ To cover any width of opening, any number of doors can be used.
- ▶ To accommodate different building designs, doors can slide to one or both sides.
- ▶ Hinged door for easy access may be incorporated into a sliding door.
- ▶ Where doors are fitted externally, a canopy is recommended.

**DOOR SPECIFICATION**

**Track System:** Single Run 2000

For Individual Doors:

Max Door Height 6000mm  
Max Door Weight 2000kg  
Door Thickness 60-70mm

For ease of operation it is recommended that the door width should not exceed 75% of door height.

Timber doors for industrial applications should be framed, ledged and braced.  
Metal doors should be constructed of box section, channel or angle framing, well braced and clad with flat or corrugated sheets.

**HARDWARE SPECIFICATION**

**Track:** 307 (5mm thick)  
Material Zinc dichromate steel  
Standard lengths 2000mm and 3000mm

**Brackets:**

Face fitted – open & closed	1S/307	Pressed steel, zinc plated
Face fitted – open & closed	9S/307	Pressed steel, zinc plated
Soffit fitted	2S/307	Pressed steel, zinc plated
Soffit fitted – open & closed	3S/307	Pressed steel, zinc plated
Soffit fitted – open & closed	4S/307	Pressed steel, zinc plated

Joining brackets are recommended at each join in the track. The joining bracket reference number has the letter 'X' after the letter 'S' – i.e. 1SX/307.

Fit a joining bracket at each join in the track, a closed bracket at each end of the run and open brackets in between and at not more than 750mm centres.

**Hangers (2 per door):**

Timber Doors - apron fitting	53FJS
Metal Doors - angle frame	56FJS
Metal Doors - box frame	56FJLS

Hangers are fitted with steel wheels on maintenance free sealed for life precision ball bearings.

Vertical adjustment is simple and positive.

All steel parts are zinc plated.

**Guides:**

Timber Doors - face fitting	102/97	with steel roller
Metal Doors - angle frame	104P/97	with brass roller
Metal Doors - box frame	104PL/97	with brass roller

All steel parts are zinc plated.

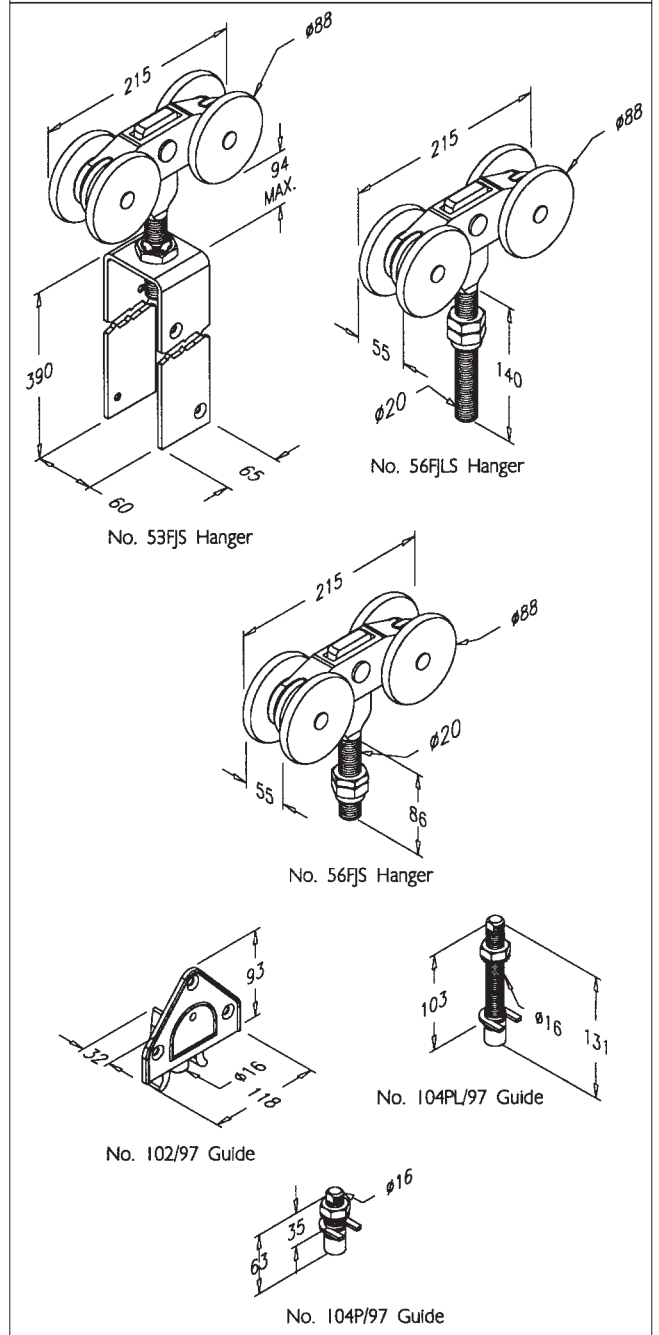
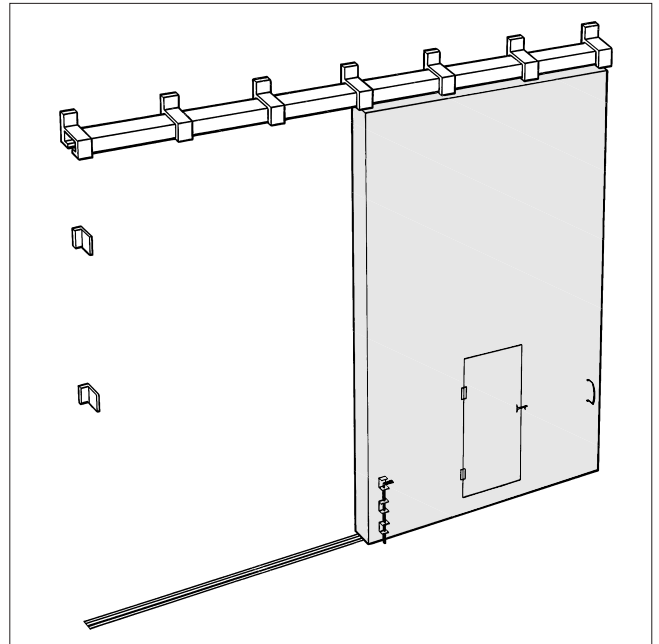
All steel parts are zinc plated.

**Channels:**

Deep channel	97 (2mm thick)	Galvanised steel
Shallow channel	100 (2mm thick)	Galvanised steel
Standard lengths	2000mm, 3000mm and 4000mm	

Pre-drilled for lugging into concrete floor and for use with a drainage funnel.

**Accessories:** Bow Handles, Flush Pulls, Surface Bolts, Flush Bolts, Door Stops and Drainage Funnel.



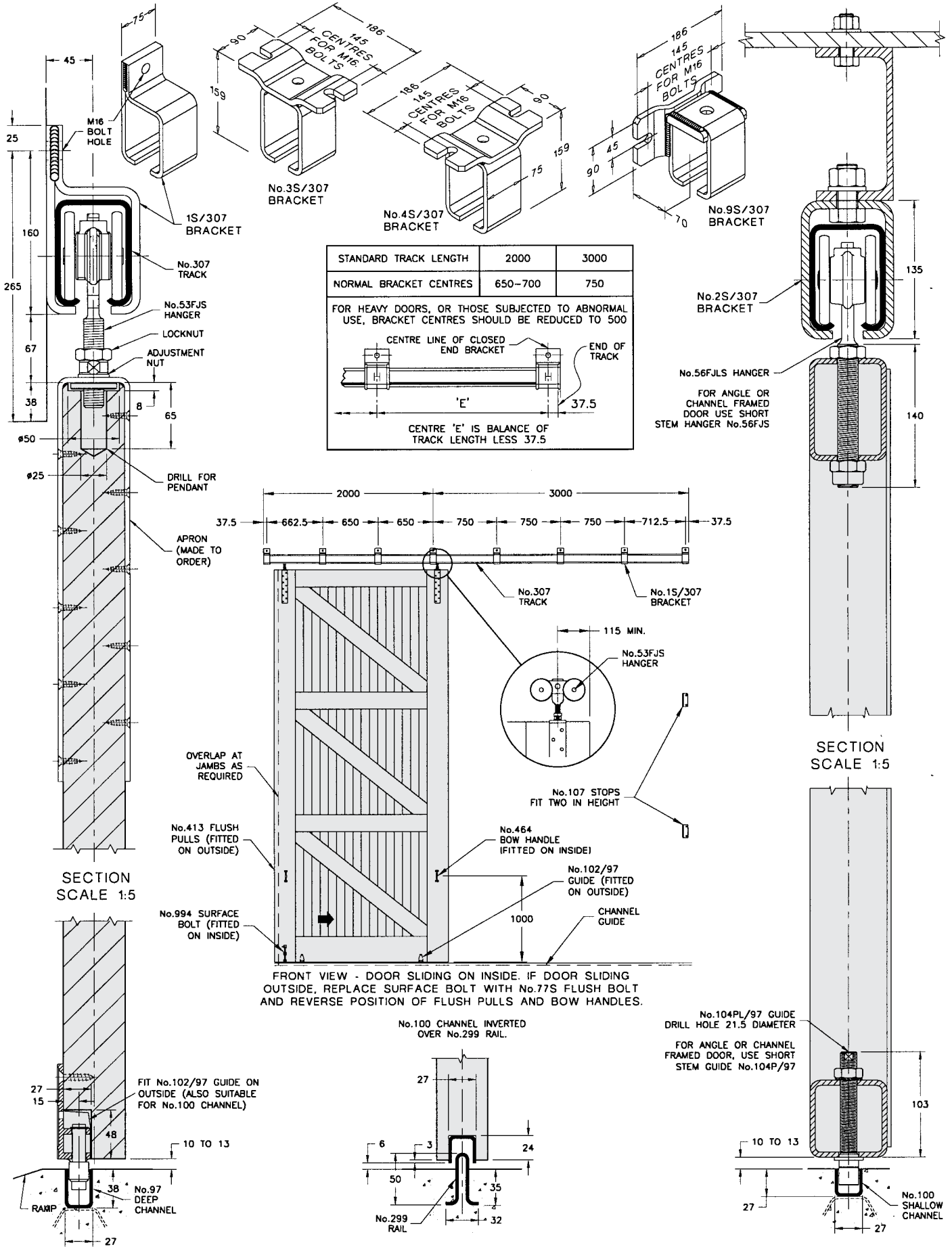
# Single Run 2000

FOR TOP HUNG STRAIGHT SLIDING DOORS, MAX. 2000kg EACH

# HENDERSON®

SLIDING & FOLDING DOOR HARDWARE

AUSTRALIA'S WIDEST RANGE



B170B

## HENDERSON RMD

Door Hardware Division of  
RMD PRESS CO. PTY LTD.

ACN 004 313 937

© COPYRIGHT HENDERSON RMD

© HENDERSON IS A REGISTERED TRADEMARK OF PC HENDERSON LTD (UK)

