

APPLICATION

- ▶ Widely used in lighter commercial and industrial applications.
- ▶ To cover any width of opening, any number of doors can be used.
- ▶ To accommodate different building designs, doors can slide to one or both sides.
- ▶ Hinged door for easy access may be incorporated into a sliding door.
- ▶ Where doors are fitted externally, a canopy is recommended.

DOOR SPECIFICATION

Track System: Single Run I20

For Individual Doors:

Max Door Height 3000mm

Max Door Weight Nylon Tyre Hanger 120kg

Door Thickness 19-48mm

For ease of operation it is recommended that the door width should not exceed 75% of door height.

Timber doors for interior use can be of flush construction or glazed.

Timber doors for industrial applications should be framed, ledged and braced.

Metal doors should be constructed of box section, channel or angle framing, well braced and clad with flat or corrugated sheets.

STANDARD SETS

Sets comprise, top track, hangers, door stops, nylon guide, screws and instructions.

Set No	Max Door width	Track Length
HE3	950mm	2000mm
HE4	1450mm	3000mm
Pack Set No	HE1	

The HE1 is a pack of fittings only without track

HARDWARE SPECIFICATION

Track: 120
 Material Aluminium
 Standard lengths 2000mm, 3000mm, 4000mm and 6000mm
 Aluminium track available in mill or clear anodised.

Brackets:
 Face fitted Stainless Steel, angle ISS/250
 Fit at 600mm maximum centres.

Hangers (2 per door):

Hangers	Full Stainless	
MDF Doors – face fitting	50EN	–
Timber Doors – plate (surface)	57EN	57SS/EN
Metal Doors – angle frame	56EN	56SS/EN
Timber Door – plate (flush)	58EN	58SS/EN

All hangers suffixed 'N' have nylon tyre wheels and are fitted with ball race bearings. Nylon tyre wheel hangers should not be used on installations involving temperatures exceeding 80°C.

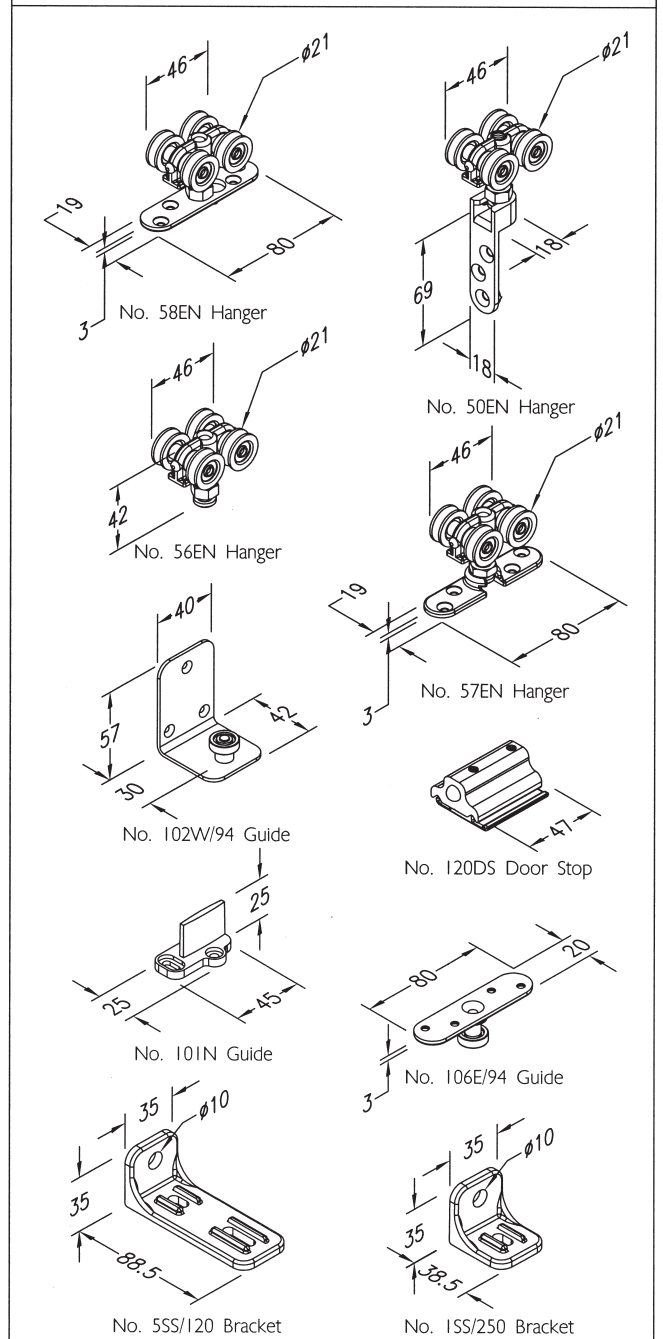
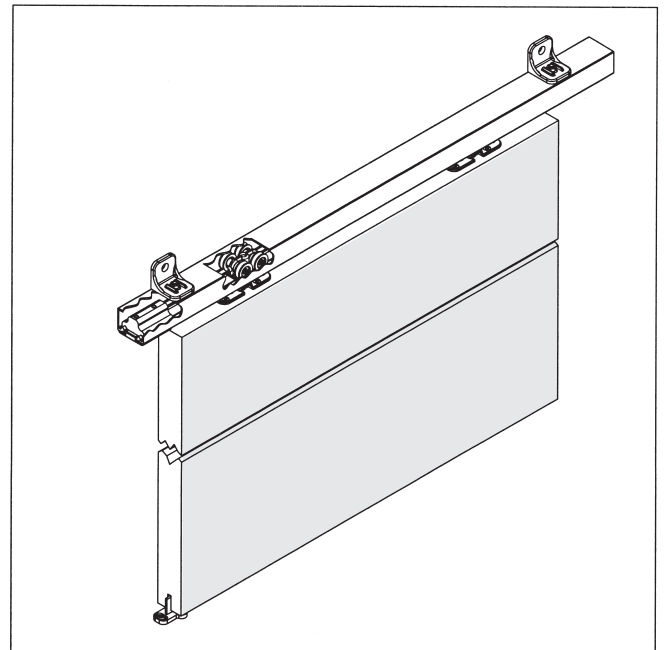
Guides:

Timber Doors – SS plate fitting	106E/94
Metal Doors – box frame	104PL/97
Timber Doors – nylon guide	101N
Multiple Doors	102W/94

Channels:
 94A Aluminium
 94B Brass
 94PA Aluminium support channel for 94P
 94P Polypropylene

Standard lengths
 94A, 94B, 94P and 94PA 2000mm, 3000mm, 4000mm, 6000mm
 94P clips into 94PA to provide smooth surface for precision bearing to slide against.

Accessories: Bow Handles, Flush Pulls, Surface Bolts, Flush Bolts, Door Stops.



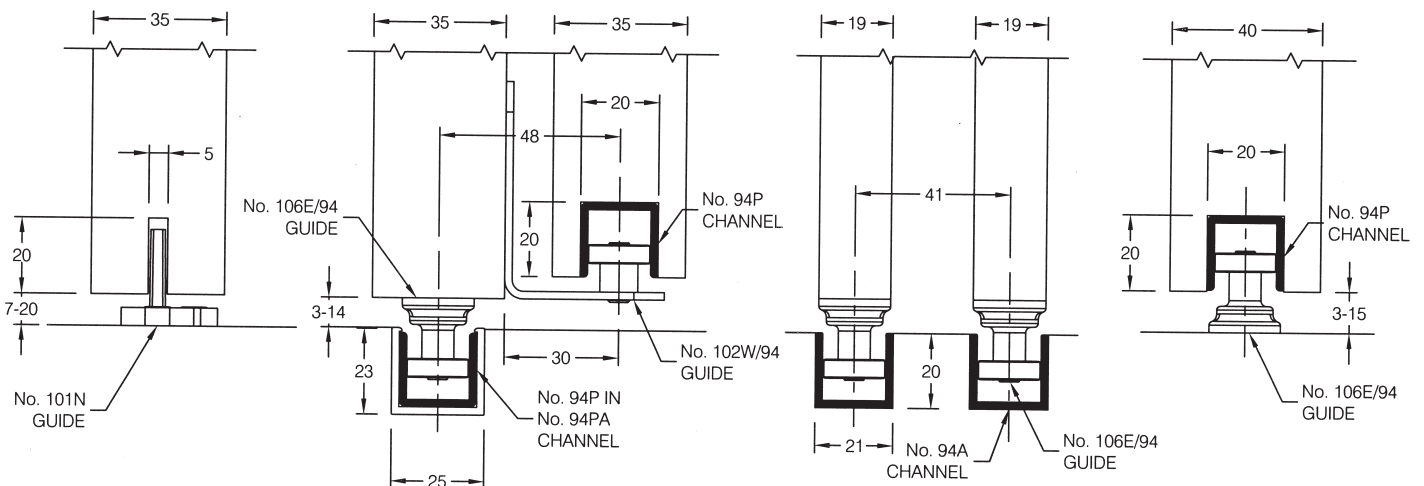
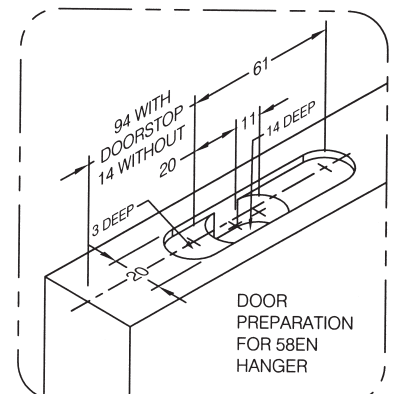
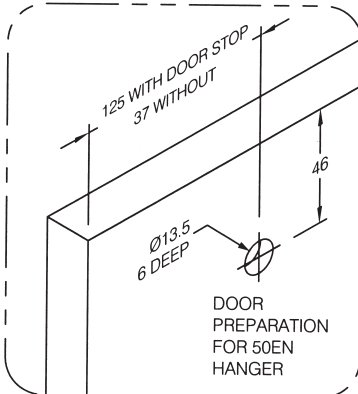
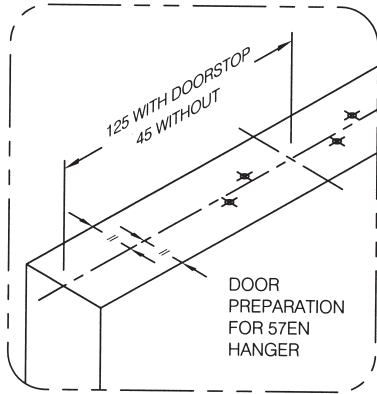
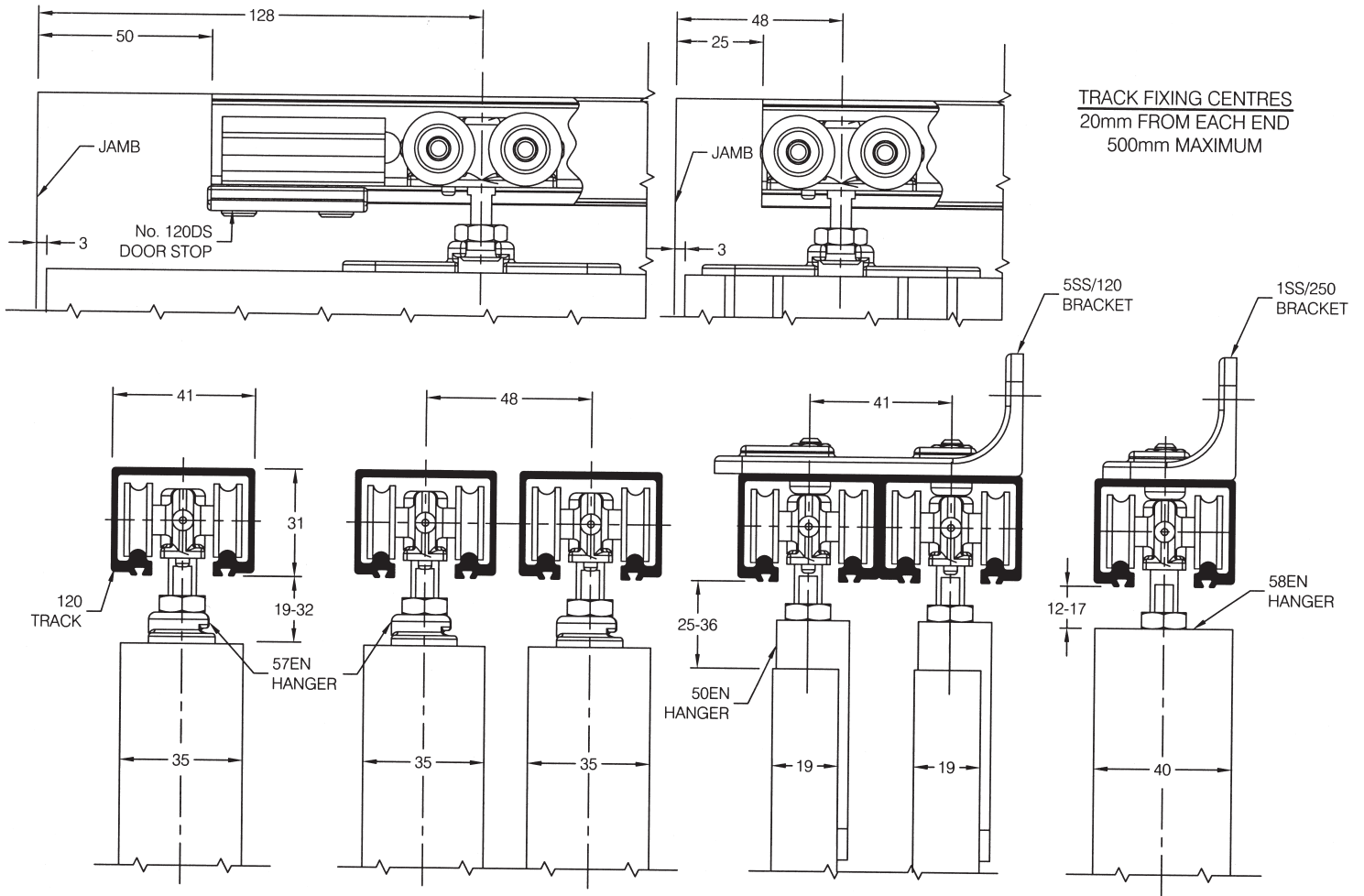
Single Run I20

FOR TOP HUNG STRAIGHT SLIDING DOORS, MAX. 120kg EACH

HENDERSON[®]

SLIDING & FOLDING DOOR HARDWARE

AUSTRALIA'S WIDEST RANGE



B125B

HENDERSON RMD

Door Hardware Division of
RMD PRESS CO. PTY LTD.
ACN 004 313 937

© COPYRIGHT HENDERSON RMD

© HENDERSON IS A REGISTERED TRADEMARK OF PC HENDERSON LTD (UK)

