

APPLICATION

- ▶ Suitable for large and heavy residential or commercial folding partitions.
- ▶ Leaves can fold to one or both sides of the opening and can be stacked behind a reveal if required.
- ▶ To cover any width of opening, any number of folding units can be used.

DOOR SPECIFICATION

Track System: Endfold 125

For Individual Leaves:

Max Leaf Height	4500mm
Max Leaf Weight	125kg
Max Leaf Width	1200mm
Min Leaf Thickness	44mm*

*If leaves less than 44mm thick contact the Technical Department of Henderson RMD.

Folding units of up to eight leaves can be hinged to a post.

A unit with an odd number of leaves, hinged to a post, provides a hinged access door. Alternatively, access should be through either a separate door hinged to a post or a door hinged in one of the folding leaves.

Floating units consist of four, six or eight leaves.

Instruction on leaf width calculation is shown overleaf.

Clearance between leaves to be 2mm minimum.

Door leaves should be constructed to provide secure fitting for the hangers, hinges and guides.

Timber leaves can be flush, panelled or glazed. Suitable also for aluminium and steel framed doors. For frameless glass doors contact the Technical Department of Henderson RMD.

HARDWARE SPECIFICATION

Track:	500
Material	Aluminium, satin anodised
Standard lengths	2000mm, 3000mm, 4000mm, 5000mm and 6000mm.

Fasten track at 500mm maximum centres, with M10 stainless steel bolts, reducing to 250mm centres at stacking areas and 25mm from track ends and joints.

Track Jointing Plate: 500J180

Use four at each butt joint in the track.

Hanger: 500 HW/21C

Hanger is fitted with steel wheels on maintenance free sealed for life precision ball bearings. Hanger body steel in black powdercoat with stainless steel M16 adjusting bolt attached to angle assembly.

Vertical adjustment is simple and positive.

Guide:

With brass roller 21R/94

Steel parts on guide are zinc plated.

Hinges:

Butt hinge 100x75	403/3B	Brass in polished finish.
Butt hinge, button tipped, 100x75	404/3S	Stainless steel.

On leaves up to 3000mm high fit 3 hinges, above 3000mm fit 4 hinges.

Channels:	94A	Aluminium
	94B	Brass

Standard lengths 2000mm, 3000mm, 4000mm and 6000mm

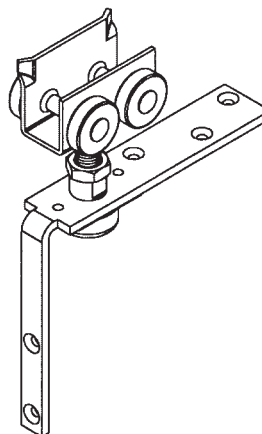
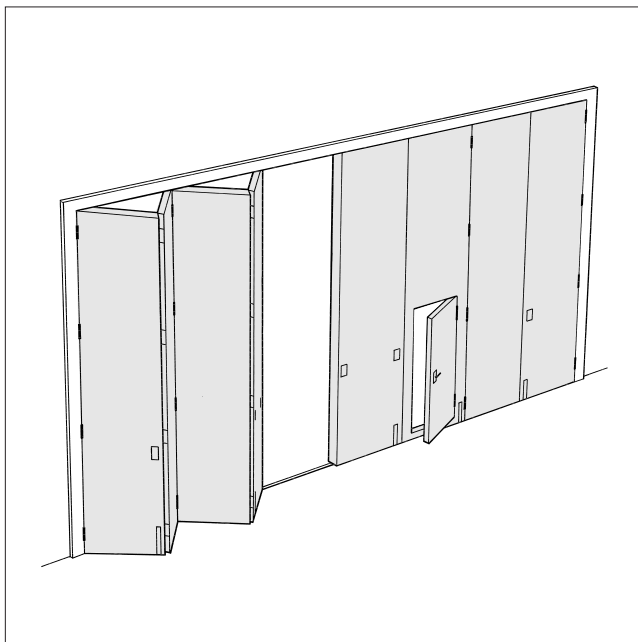
Drilled and countersunk for screwing to timber floor or attaching to lugs 94L when installing in concrete floor.

Channel Infil: 95 Brass to suit 94B Channel

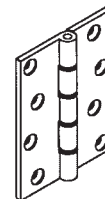
Standard lengths 2000mm, 3000mm and 5000mm

Accessories: Flush Pulls and Flush Bolts.

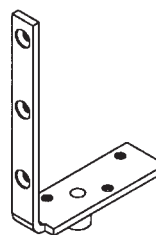
Aluminium in satin anodised finish. Solid brass in polished brass or satin chrome finish.



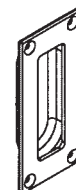
No. 500 HW/21C Hanger



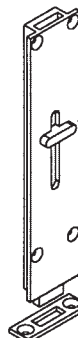
No. 403/3B Butt Hinge



No. 21R/94 Guide



No. 400 Flush Pull in satin anodised aluminium, polished brass or satin chrome. 108x48 with 17 mortise



No. 456 Flush Bolt with 45 throw. Available in polished brass or satin chrome. 190x40 with 13 mortise

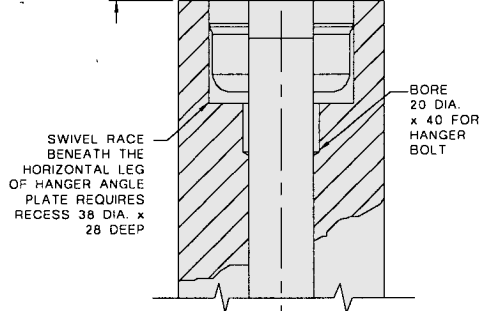
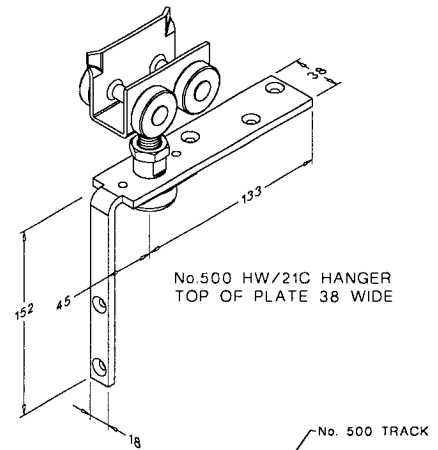
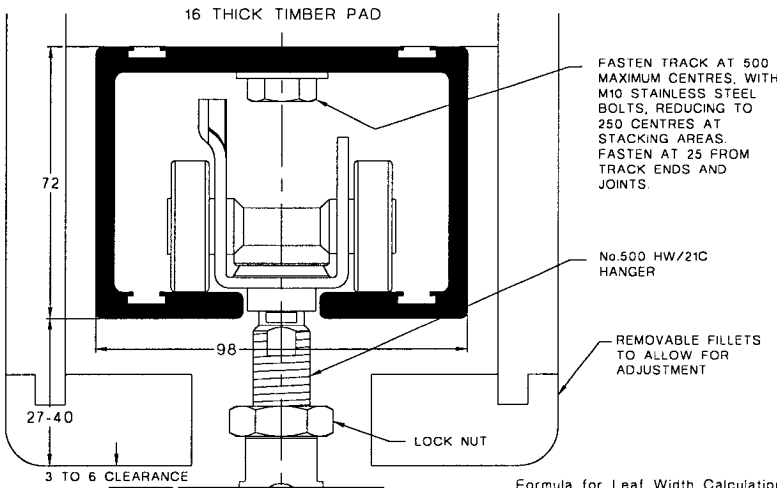


No. 454 Flush Bolt in satin anodised aluminium 190x41 with 8 mortise

Endfold 125

FOR TOP HUNG INTERIOR FOLDING PARTITIONS, MAX. 125kg EACH LEAF

HENDERSON[®]
SLIDING & FOLDING DOOR HARDWARE
AUSTRALIA'S WIDEST RANGE



Formula for Leaf Width Calculations

All leaves are the same width, hinge pin to hinge pin centres, except a leaf hinged to a post, which must be narrower by the sum of half the leaf thickness plus 45mm.

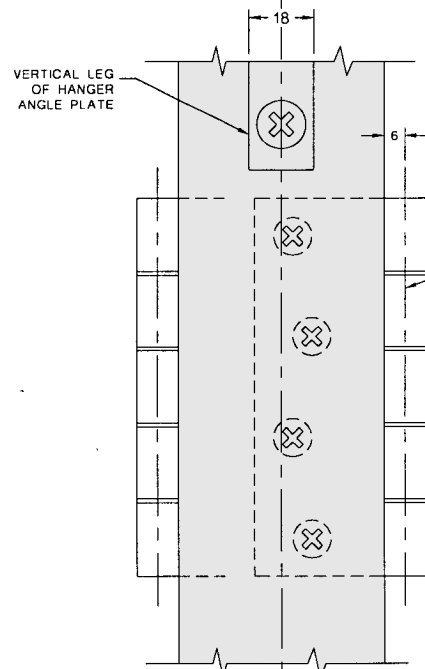
If the stiles are being rebated, the leaves will have to be made wider than calculated to allow for the rebating.

The formula for calculating the width of leaves for a partition 44 thick is as follows :-
Add 67 (44/2 + 45) to the width between the rebated posts for each leaf hinged to a post and divide the result by the number of leaves. This gives the width of the wider leaves. A leaf hinged to a post is 67 less.

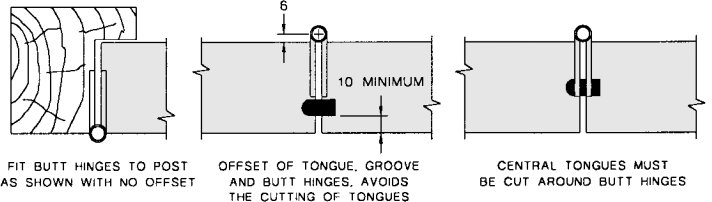
Deduct 2 from each measurement for clearances, for example :- 2 units of 4 leaves 44 thick each hinged to opposite posts, with 6986 overall between posts,

$$6986 + 67 + 67 / 8 = 890 \text{ less } 2 = 888 \text{ for the width of the wider leaves.}$$

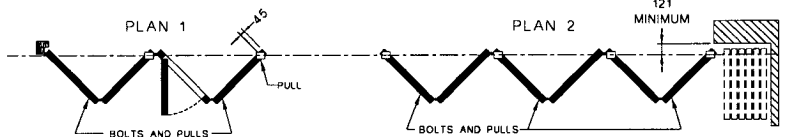
$$890 \text{ less } 67 \text{ less } 2 = 821 \text{ for the width of leaves hinged to posts.}$$



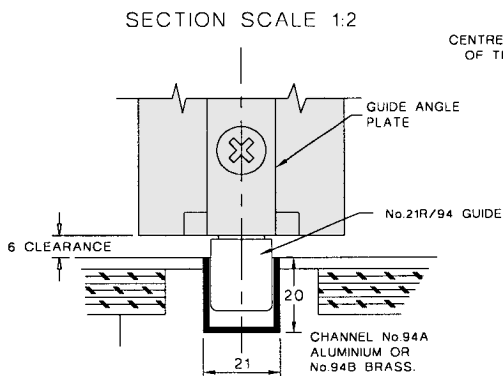
FIT BUTT HINGES 6 OFFSET TO THE CENTRE OF HINGE PIN, EXCEPT THOSE HINGES ON THE JAMB. THESE HINGES MUST BE FITTED WITH CENTRE OF HINGE FLUSH WITH FACE OF LEAF. SEE ILLUSTRATION ON RIGHT.



TYPICAL ELEVATION AS PER PLAN 1

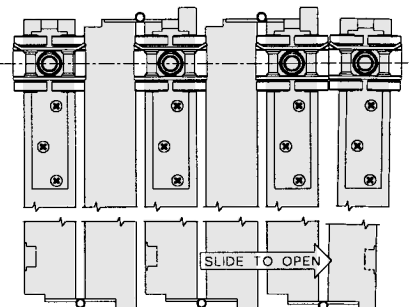
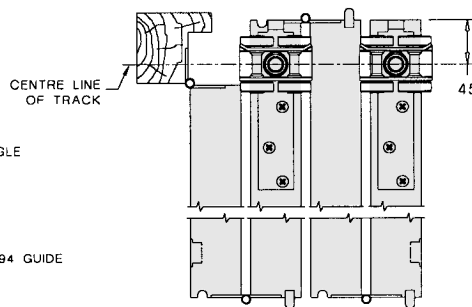


SECTION SCALE 1:2



4 LEAVES HINGED TO POST AS PER PLAN 1

6 LEAVES "FLOATING" TO RIGHT AS PER PLAN 2



TONGUE AND GROOVE JOINTS ARE RECOMMENDED. TONGUES TO BE HARDWOOD.

IF REBATING IS PREFERRED, IT MUST BE TO THE ABOVE LAYOUT, WITH THE TWO RECESSES ON EACH LEAF BEING TAKEN OUT OF THE SAME FACE

HENDERSON RMD

Door Hardware Division of
RMD PRESS CO. PTY LTD.
ACN 004 313 937

© COPYRIGHT HENDERSON RMD

© HENDERSON IS A REGISTERED TRADEMARK OF PC HENDERSON LTD (UK)

DI40B

